



VISTA
Design & Assessment

HAMBLETON
DISTRICT COUNCIL

**HAMBLETON DISTRICT COUNCIL
LOCAL GREEN SPACE ASSESSMENT:
COMBINED RECOMMENDATIONS REPORT**

November 2018

CONTENTS

INTRODUCTION.....	page 1
METHODOLOGY.....	page 5
MAPPING FOR ALL PROPOSED SITES.....	page 7 - 36
SITE ALLOCATION SUMMARIES (FOR SITES IN ASSESSMENT PHASE 1 & 2).....	page 37 - 50
Bedale & Brandsby	page 38
Brompton, Carlton Husthwaite & Crakehall.....	page 39
Easingwold & Great Ayton.....	page 40 - 41
Hackforth, Helperby, Huby & Husthwaite.....	page 42
Hutton Rudby & Kirkby Fleetham.....	page 43
Leeming, Londonderry & Exelby.....	page 44
Northallerton, Scruton, Sessay & Snape.....	page 45 - 46
Stillington & Stokesley.....	page 47
Thirsk & Thornton le Beans.....	page 48
Topcliffe & West Tanfield.....	page 49
.	
SITE ALLOCATION SUMMARIES (FOR SITES IN ASSESSMENT PHASE 3 & 4).....	page 51 - 53
Appleton Wiske, Easingwold & Stokesley.....	page 52
Kirby & Northallerton.....	page 53

1. INTRODUCTION

The National Planning Policy Framework (NPPF, DCLG, 2012) allows local communities to identify green areas of particular local significance for designation as 'Local Green Spaces'. These designations will provide protection and only allow new development in 'very special circumstances'.

Most green spaces will not be appropriate for designation and this report assesses which of the 'call for sites' LGS nominations to Hambleton District Council are appropriate for designation when reviewed against the NPPF and NPPF guidance.

Nominated sites were assessed in four 'phases' and assessments were carried out in:

- Phase 1 August 2016;
- Phase 2 March 2017;
- Phase 3 June 2017; and
- Phase 4 February 2018.

Structure of this report

The Methodology outlining the assessment process for determining if nominated sites meet the LGS criteria is shown in **Section 2** of this report.

Maps showing the location and reference numbers for each nominated site are shown in **Section 3** of this report.

Summary tables for the LGS Allocation of proposed sites are shown in **Section 4** of this report. These summary tables show if designation has been supported or not supported and the reason for the allocation.

The summary tables are split into two sections (both grouped alphabetically by settlement). The first section is for sites assessed in Phases 1 and 2 (the assessment for these sites has been to public consultation) and the second section is for sites assessed in phases 3 and 4 (not yet consulted on).

Policy Context for Local Green Spaces

National Planning Policy Framework, 2012

Para. 76. Local communities through local and neighbourhood plans should be able to identify for special protection green areas of particular importance to them. By designating land as Local Green Space local communities will be able to rule out new development other than in very special circumstances. Identifying land as Local Green Space should therefore be consistent with the local planning of sustainable development and complement investment in sufficient homes, jobs and other essential services. Local Green Spaces should only be designated when a plan is prepared or reviewed, and be capable of enduring beyond the end of the plan period.

Para. 77. The Local Green Space designation will not be appropriate for most green areas or open space. The designation should only be used:

- where the green space is in reasonably close proximity to the community it serves;
- where the green area is demonstrably special to a local community and holds a particular local significance, for example because of its beauty, historic significance, recreational value (including as a playing field), tranquillity or richness of its wildlife; and
- where the green area concerned is local in character and is not an extensive tract of land.

Para. 78. Local policy for managing development within a Local Green Space should be consistent with policy for Green Belts.

These criteria are not specific, but act as guidance which should then be interpreted at a local level.

Further guidance is detailed in the published NPPF Guidance Notes.

Open space, sports and recreation facilities, public rights of way and local green space (DCLG, March 2014).

Designating any Local Green Space will need to be consistent with local planning for sustainable development in the area. In particular, plans must identify sufficient land in suitable locations to meet identified development needs and the Local Green Space designation should not be used in a way that undermines this aim of plan making.

Paragraph: 007 Reference ID: 37-007-20140306

Local Green Space designation will rarely be appropriate where the land has planning permission for development. Exceptions could be where the development would be compatible with the reasons for designation or where planning permission is no longer capable of being implemented.

Paragraph: 008 Reference ID: 37-008-20140306

New residential areas may include green areas that were planned as part of the development. Such green areas could be designated as Local Green Space if they are demonstrably special and hold particular local significance.

Paragraph: 012 Reference ID: 37-012-20140306

Some areas that may be considered for designation as Local Green Space may already have largely unrestricted public access, though even in places like parks there may be some restrictions. However, other land could be considered for designation even if there is no public access (eg green areas which are valued because of their wildlife, historic significance and/or beauty).

Designation does not in itself confer any rights of public access over what exists at present. Any additional access would be a matter for separate negotiation with land owners, whose legal rights must be respected.

Paragraph: 017 Reference ID: 37-017-20140306

Areas that may be considered for designation as Local Green Space may be crossed by public rights of way. There is no need to designate linear corridors as Local Green Space simply to protect rights of way, which are already protected under other legislation.

Paragraph: 018 Reference ID: 37-018-20140306

A Local Green Space does not need to be in public ownership. However, the local planning authority (in the case of local plan making) or the qualifying body (in the case of neighbourhood plan making) should contact landowners at an early stage about proposals to designate any part of their land as Local Green Space. Landowners will have opportunities to make representations in respect of proposals in a draft plan.

Paragraph: 019 Reference ID: 37-019-20140306

Designating a green area as Local Green Space would give it protection consistent with that in respect of Green Belt, but otherwise there are no new restrictions or obligations on landowners.

Paragraph: 020 Reference ID: 37-020-20140306

Management of land designated as Local Green Space will remain the responsibility of its owner. If the features that make a green area special and locally significant are to be conserved, how it will be managed in the future is likely to be an important consideration. Local communities can consider how, with the landowner's agreement, they might be able to get involved, perhaps in partnership with interested organisations that can provide advice or resources.

Paragraph: 021 Reference ID: 37-021-20140306

Other Considerations

Educational Sites

School and college playing fields and grounds would not normally be suitable for designation. This is because national guidance states that the space

must be capable of enduring beyond the plan period. In order to address future needs for school places there may be a need to reconfigure the arrangement of school buildings and playing fields. The National Planning Policy Framework states that local planning authorities should give great weight to the need to create, expand or alter schools. Therefore, educational sites (grounds and playing fields) would not normally be suitable for designation.

Playing fields and playing pitches not associated with educational establishments have some level of protection through Sport England. In addition, some cultural heritage assets are protected by designations such as Listed Building status or Registered Parks and Gardens.

In these cases, the LPA will need to consider whether LGS designation is necessary or not.

Highway Land/Roadside Verges

Highway land/roadside verges would not normally be suitable for designation. This is because national guidance states that the space must be capable of enduring beyond the plan period. Land adjoining an existing highway is the subject of 'Permitted Development' rights, which could be used to bring forward development that may be contrary to a Local Green Space designation, but would not require planning permission to be granted. Highway land may also be utilised in bringing forward future highway/transport schemes. Therefore, highway land/roadside verges would not normally be suitable for designation.

PAGE INTENTIONALLY BLANK

2. METHODOLOGY

The Assessment Process

Nominated sites were put forward for assessment in four 'phases' and assessments were carried out in:

- Phase 1 August 2016;
- Phase 2 March 2017;
- Phase 3 June 2017; and
- Phase 4 February 2018.

The proposed designation of all sites put forward for LGS designation have been "tested" against the criteria in the NPPF as part of the Local Plan process.

The first two 'phases' of assessed sites have been out to public consultation - where consultation responses conflicted with the initial assessment, the sites have been reviewed and any amendments to the assessment of sites noted in the summaries.

Sites assessed in Phases 3 and 4 have not yet been consulted on.

Individual Site Assessments

The individual site assessment checklists and aerial mapping for each proposed site are grouped alphabetically by settlement and are located in

Appendix 1: Site checklists & aerial maps.

Each of the sites nominated by the community was assessed against the three key NPPF criteria.

A site proposed as Local Green Space must meet the criteria set out within the NPPF:

1. Land must meet all the following criteria:

- **Demonstrably special to local community**
- **Reasonable close proximity to the community serves**
- **Local in character**

- **Not an extensive tract of land**
- **Not an area with extant planning permission within which the Local Green Space could not be accommodated**

Whether a site is 'extensive' or not relates to two key factors – is the site in proportion to the scale of the surrounding landscape units (such as the size of neighbouring fields) or is it below 20 ha. This size guideline (20 ha) is taken from the 'Accessible Natural Greenspace standards' (Natural England, 2008) for a site within a 'local' (2km) distance from a community.

All the sites have been considered in their entirety. If it was considered that only part of a site met the criteria then that part of the site was considered to be suitable for designation.

As sites have been proposed by the local community they are considered by this assessment to be 'special to the local community' unless noted in the assessment. It is outwith the scope of this assessment to consider the 'strength' of community support for a site - the sites put forward have therefore been considered equally on their own merits.

The assessment considers that for a site to be 'reasonably close to the community it serves' it should ideally be within walking distance (5 minutes of 300m) or be within 2km.

2. Land must hold particular local significance for at least one of the following reasons:

- **Beauty**
- **Historic Significance**
- **Recreational value**
- **Tranquility**
- **Richness of Wildlife**
- **Other reasons**

3. Designating land as Local Green Space should:

- **be consistent with local planning of sustainable development**
- **complement investment in sufficient homes, jobs and other essential services**

The views of Hambleton District Council Planning Policy Officers will input into the site assessment process to ensure these factors are considered in the site designation process.

Community Consultation

As the sites have been put forward by the community it is assumed there is evidence of community support.

Responses to objections from the initial consultation (sites in Phases 1 & 2) have been included in **Appendix 2: Amendments based on consultation responses**. Where the consultation response has conflicted with the initial assessment has been amended, this has been noted in the summary tables (in section 3 of this report).





Designation of sites with recreational value

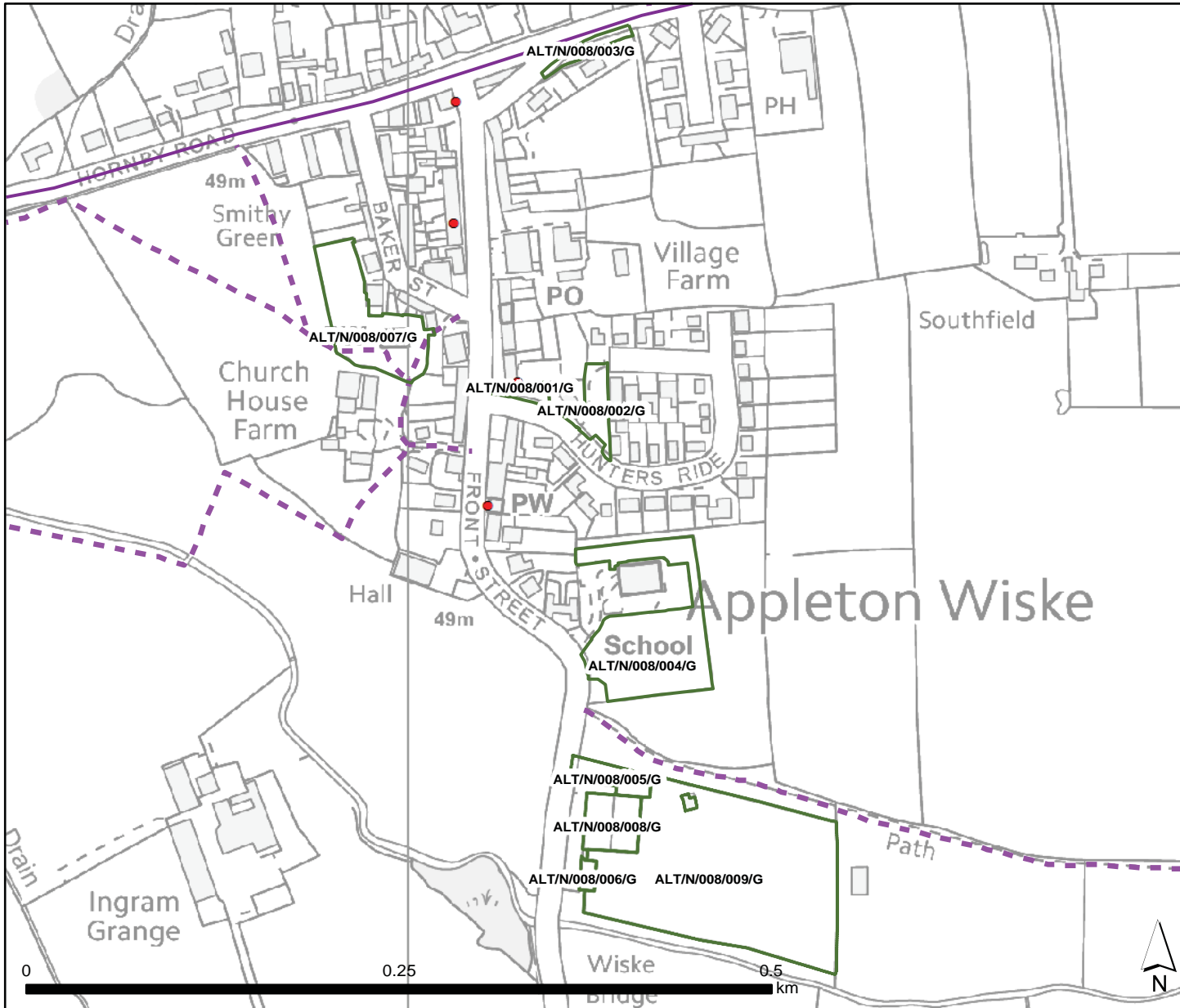
Where the assessment does recommend designation of a site due to recreational value, the assessment has taken into account ancillary facilities such as car parks, pavilion or club house in the immediate vicinity of the green spaces and recommends inclusion of these ancillary facilities within the boundary of the designation. This is on the basis that the associated facilities are key to sustaining the long term recreational value and functionality of the green space.

Designation of this nature will not preclude development which is key to sustaining the recreational value of the area of green space.

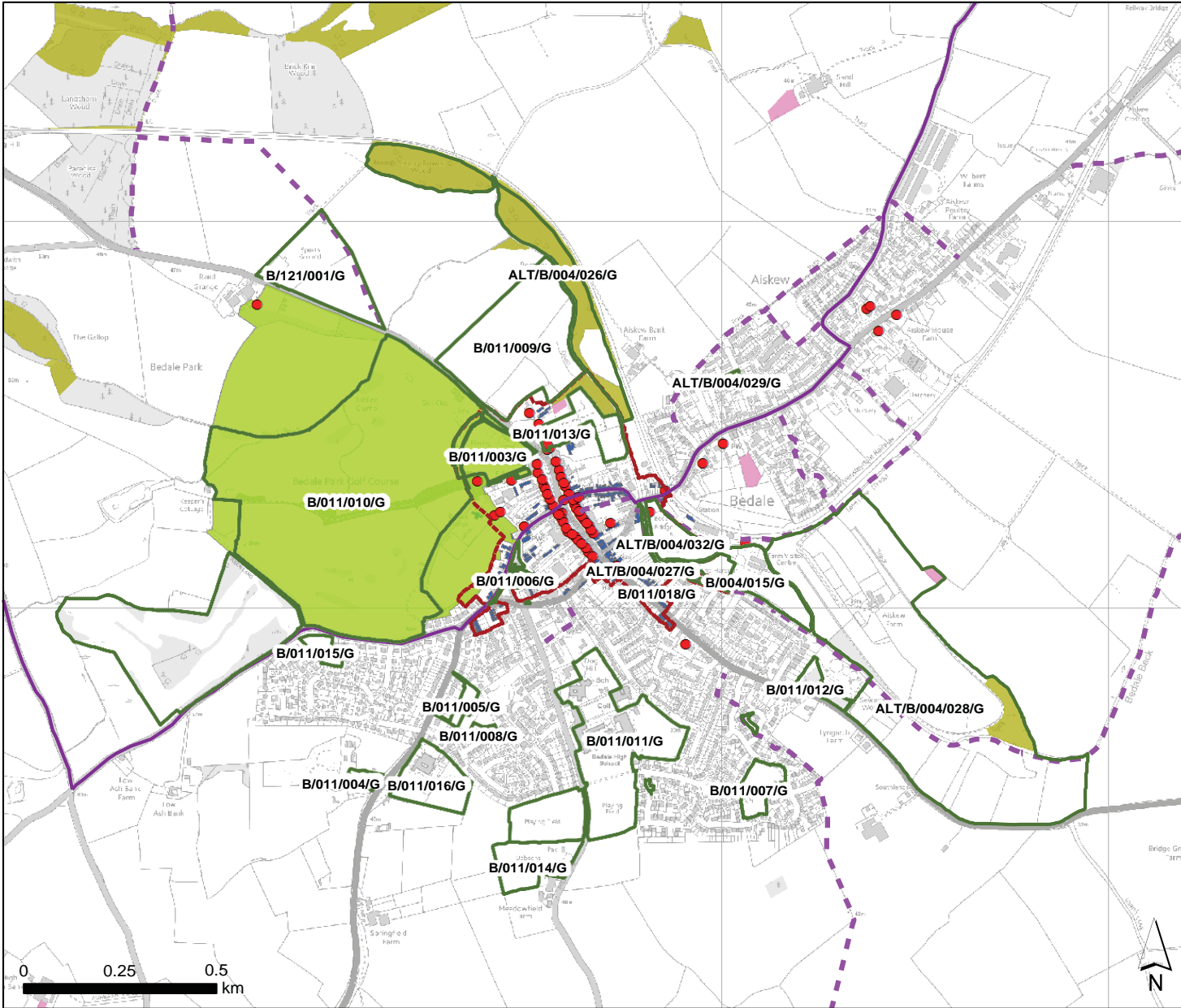
3. MAPPING OF PROPOSED ALLOCATIONS (FOR ALL PHASES OF THE LGS ASSESSMENT)

Key

-  LGS Nominated Site
-  Sustrans National Route
-  PRoW
-  Listed Building



Appleton Wiske

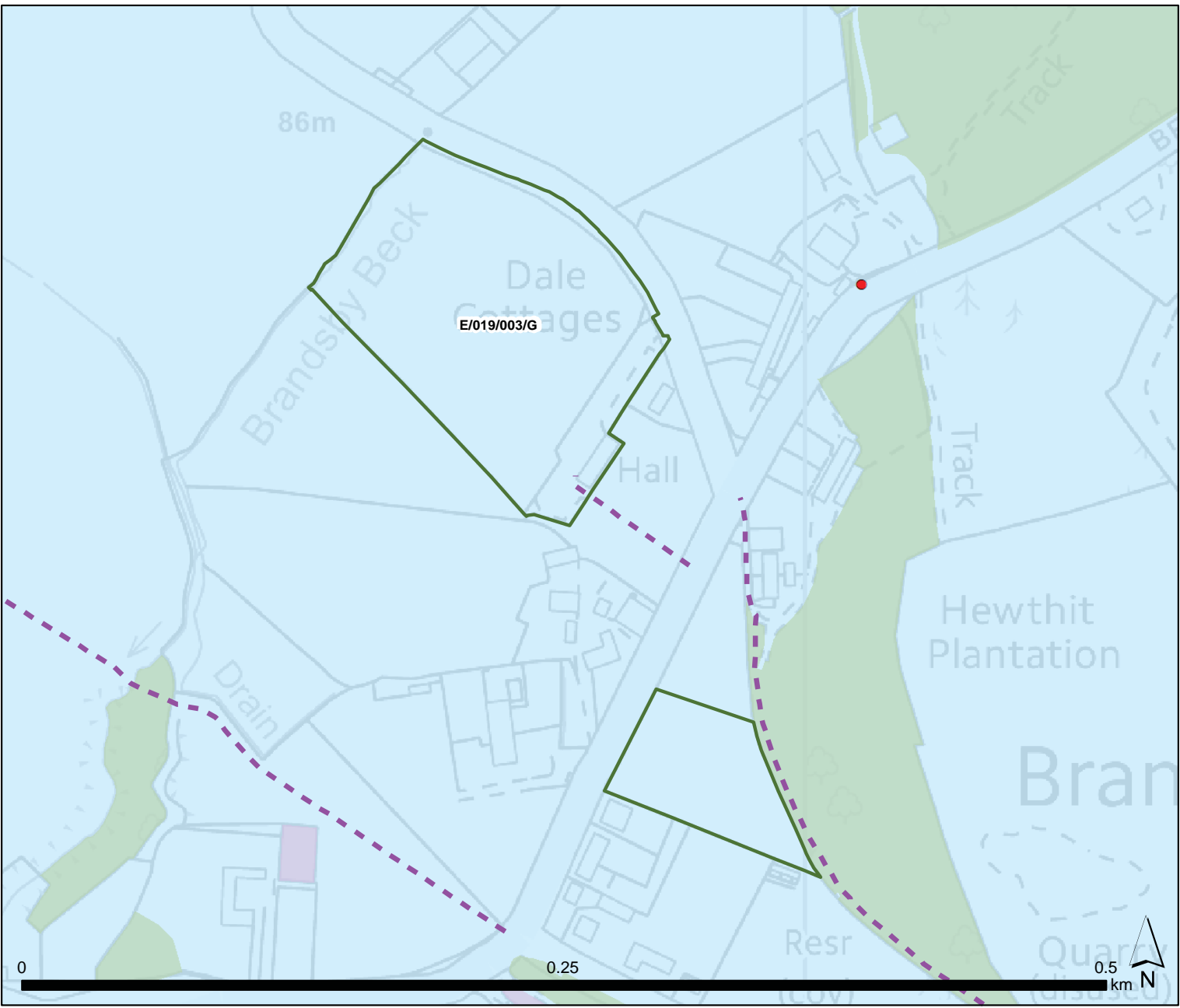


Key

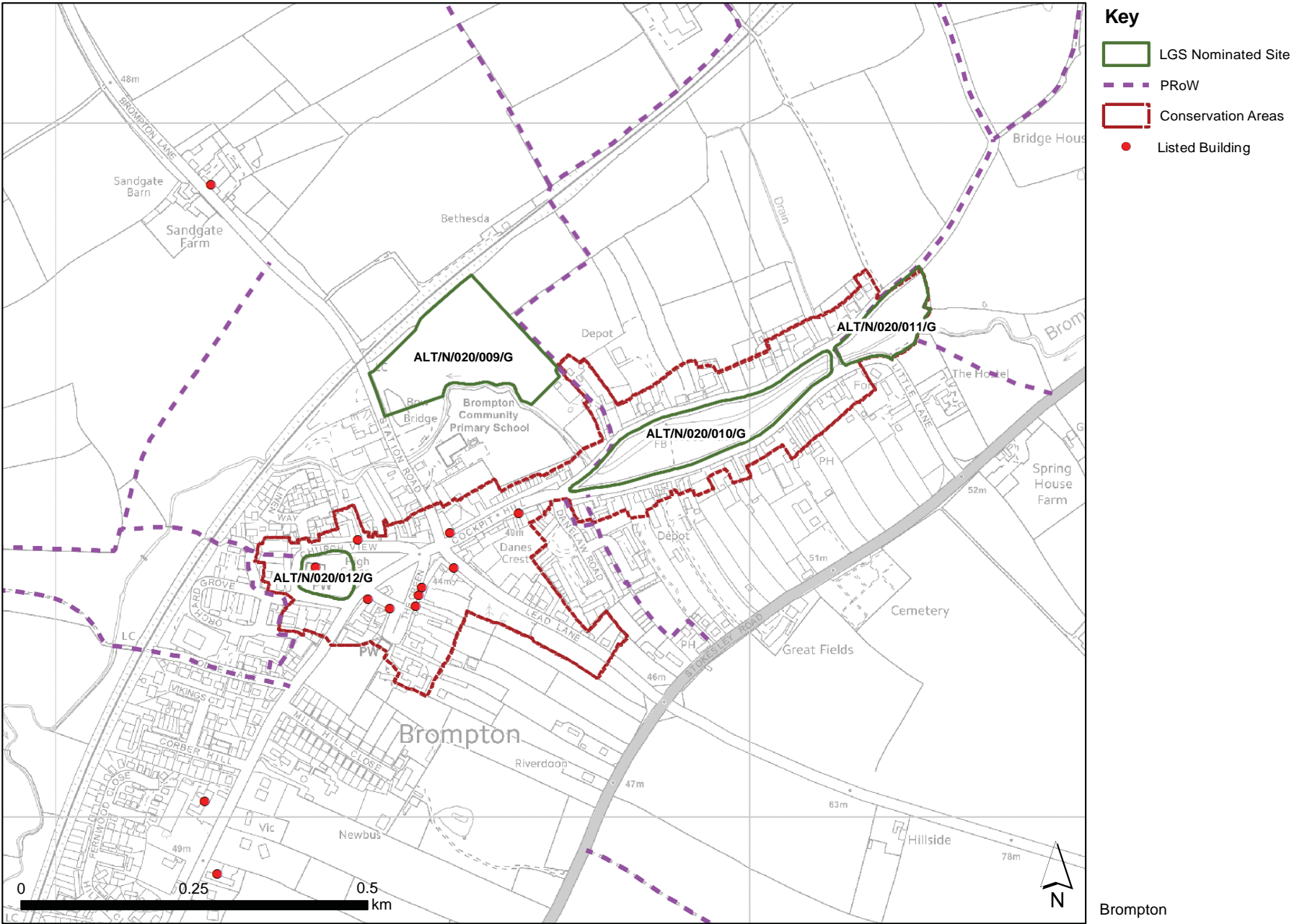
- LGS Nominated Site
 - Sustrans National Route
 - PRoW
 - Conservation Areas
 - Listed Building
 - Scheduled Monument
 - Non Designated Parks & Gardens
 - Buildings of Local Interest
- Priority Habitat Inventory**
- Main Habitat
- Deciduous woodland
 - Traditional orchard

Bedale





- Key**
- LGS Nominated Site
 - PRoW
 - Listed Building
 - AONB
- Priority Habitat Inventory**
- Main Habitat
- Deciduous woodland
 - Traditional orchard



Brandsby




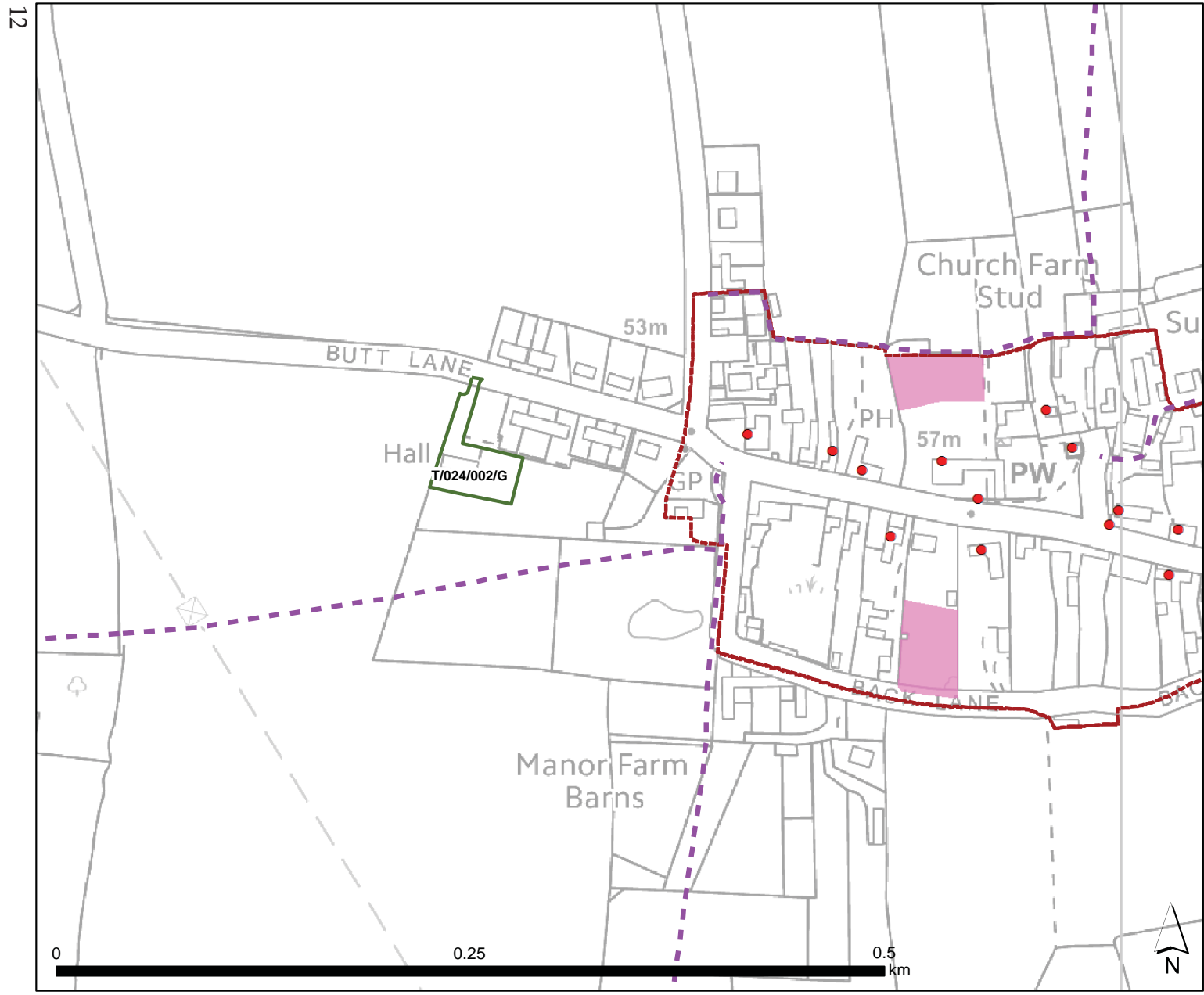
Key

-  LGS Nominated Site
-  PRoW
-  Conservation Areas
-  Listed Building

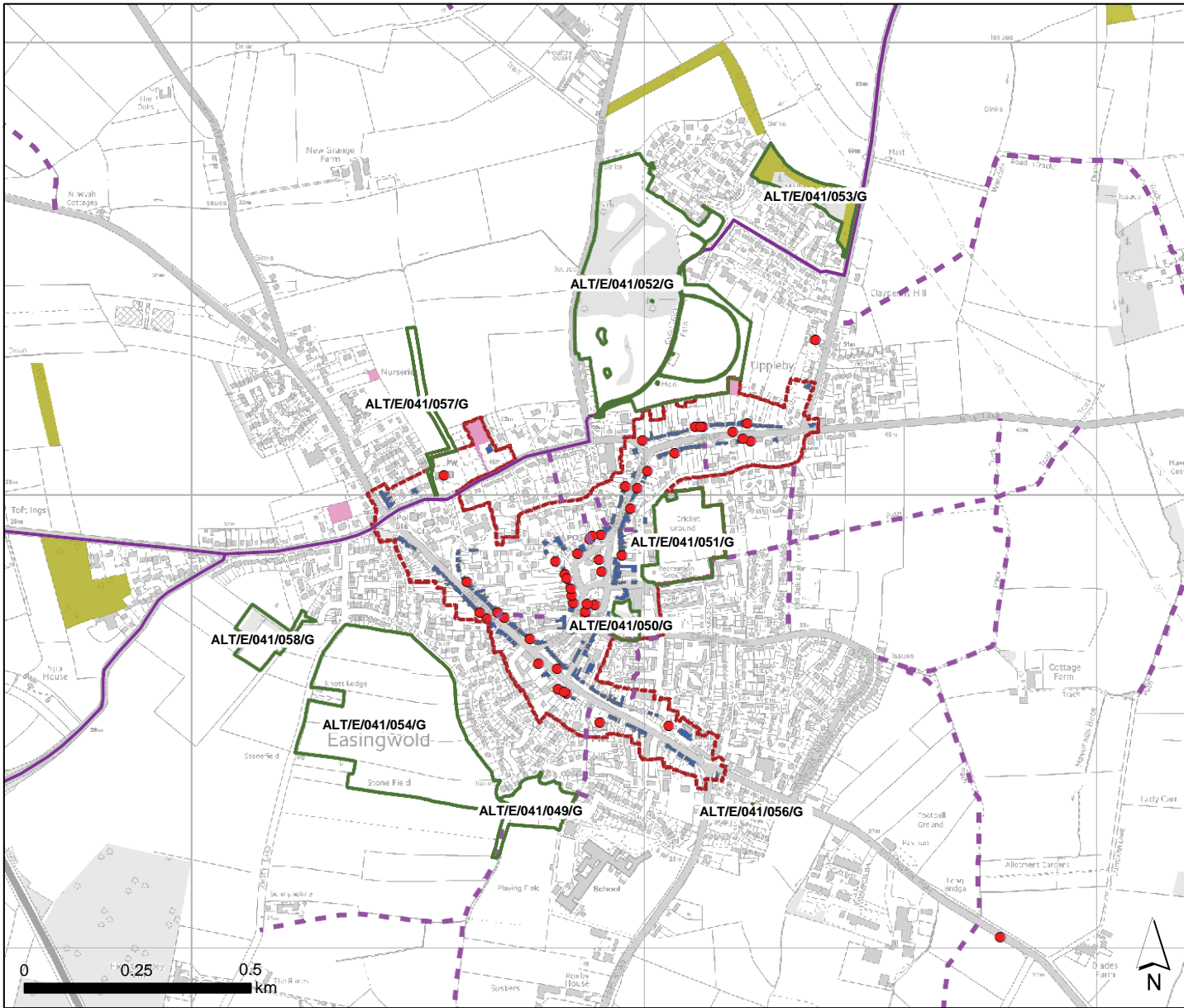
Priority Habitat Inventory

Main Habitat

-  Traditional orchard

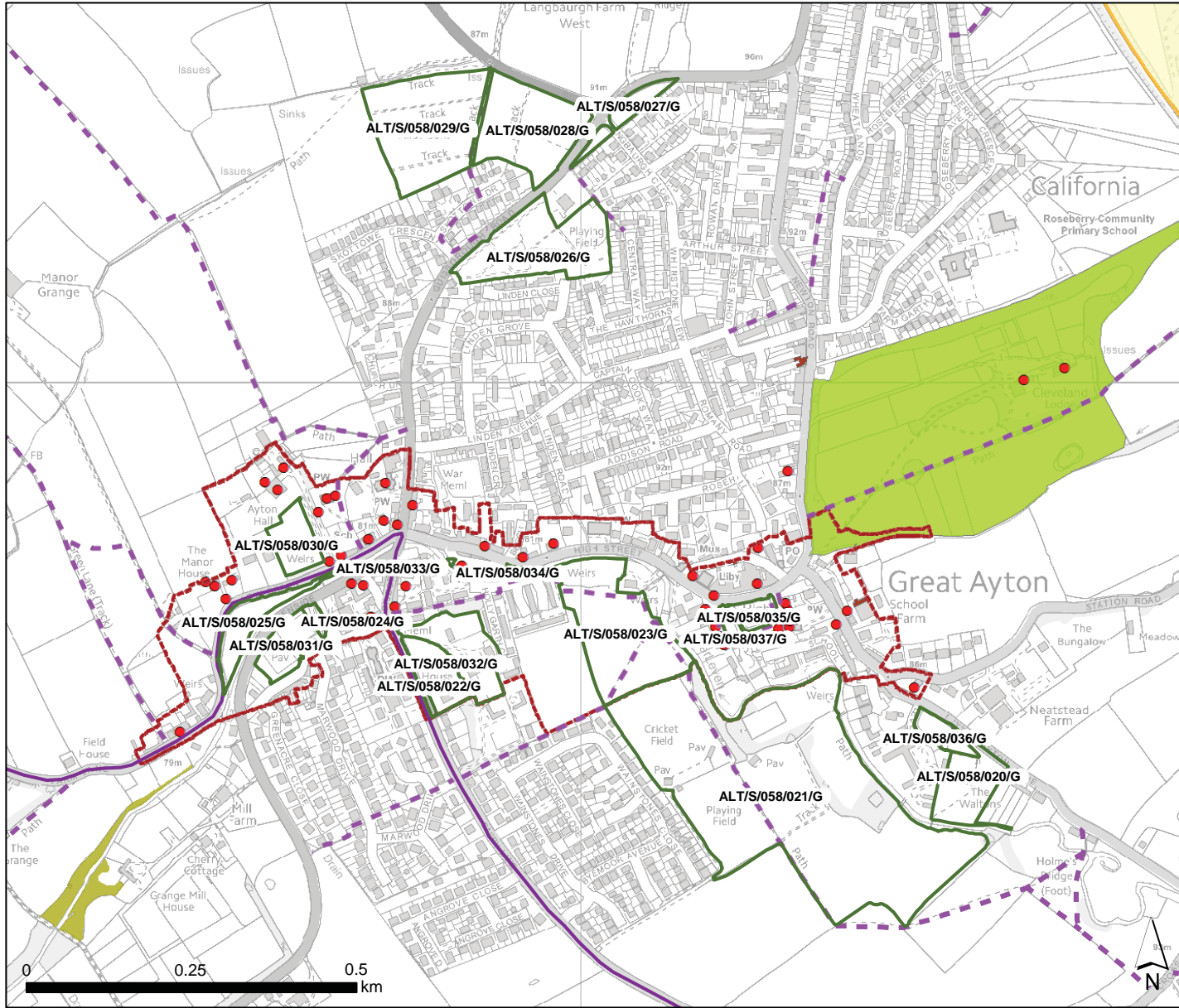


Carlton Husthwaite



- Key**
- LGS Nominated Site
 - Sustrans National Route
 - PRoW
 - Conservation Areas
 - Listed Building
 - Buildings of Local Interest
- Priority Habitat Inventory**
- Main Habitat
- Deciduous woodland
 - Traditional orchard

Easingwold



Key

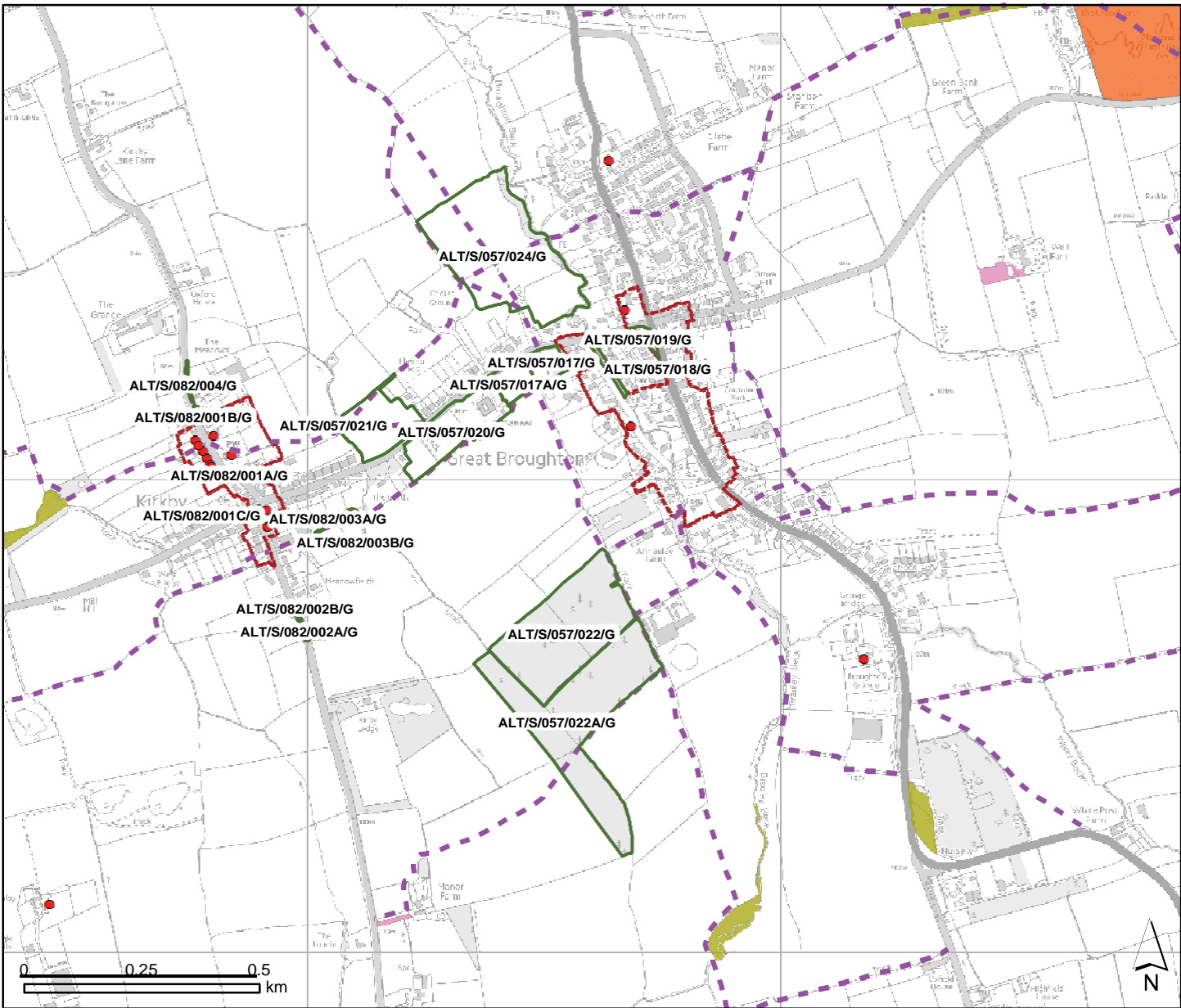
- LGS Nominated Site
- Sustrans National Route
- PRoW
- Conservation Areas
- Listed Building
- Non Designated Heritage Assets
- Non Designated Parks & Gardens
- National Park

Priority Habitat Inventory

Main Habitat

- Deciduous woodland

Great Ayton



Key

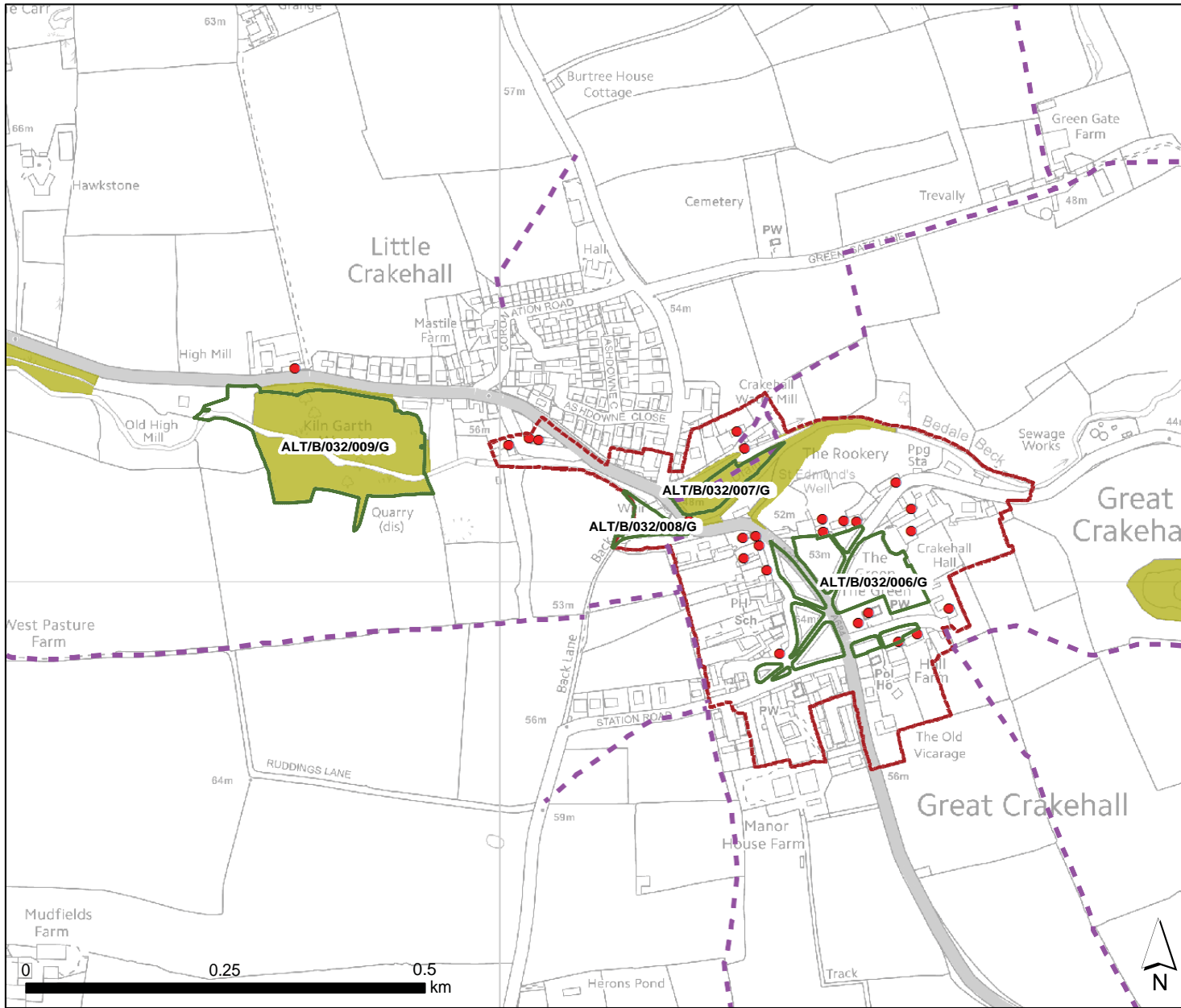
- LGS Nominated Site
- PRoW
- Conservation Areas
- Listed Building
- Scheduled Monument

Priority Habitat Inventory

Main Habitat

- Deciduous woodland
- Traditional orchard

Great Broughton



Key

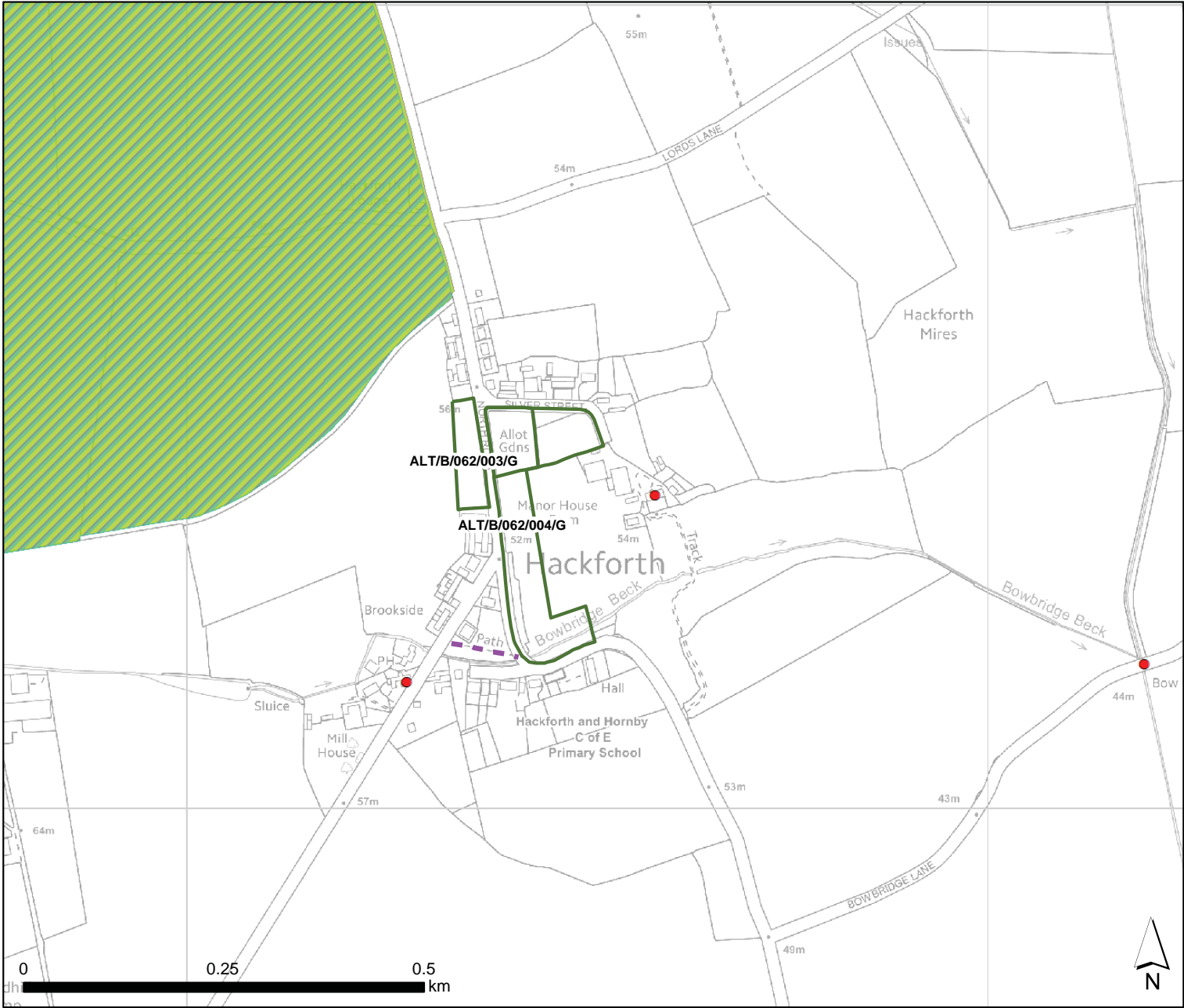
- LGS Nominated Site
- PRoW
- Conservation Areas
- Listed Building

Priority Habitat Inventory






Main Habitat

- Deciduous woodland

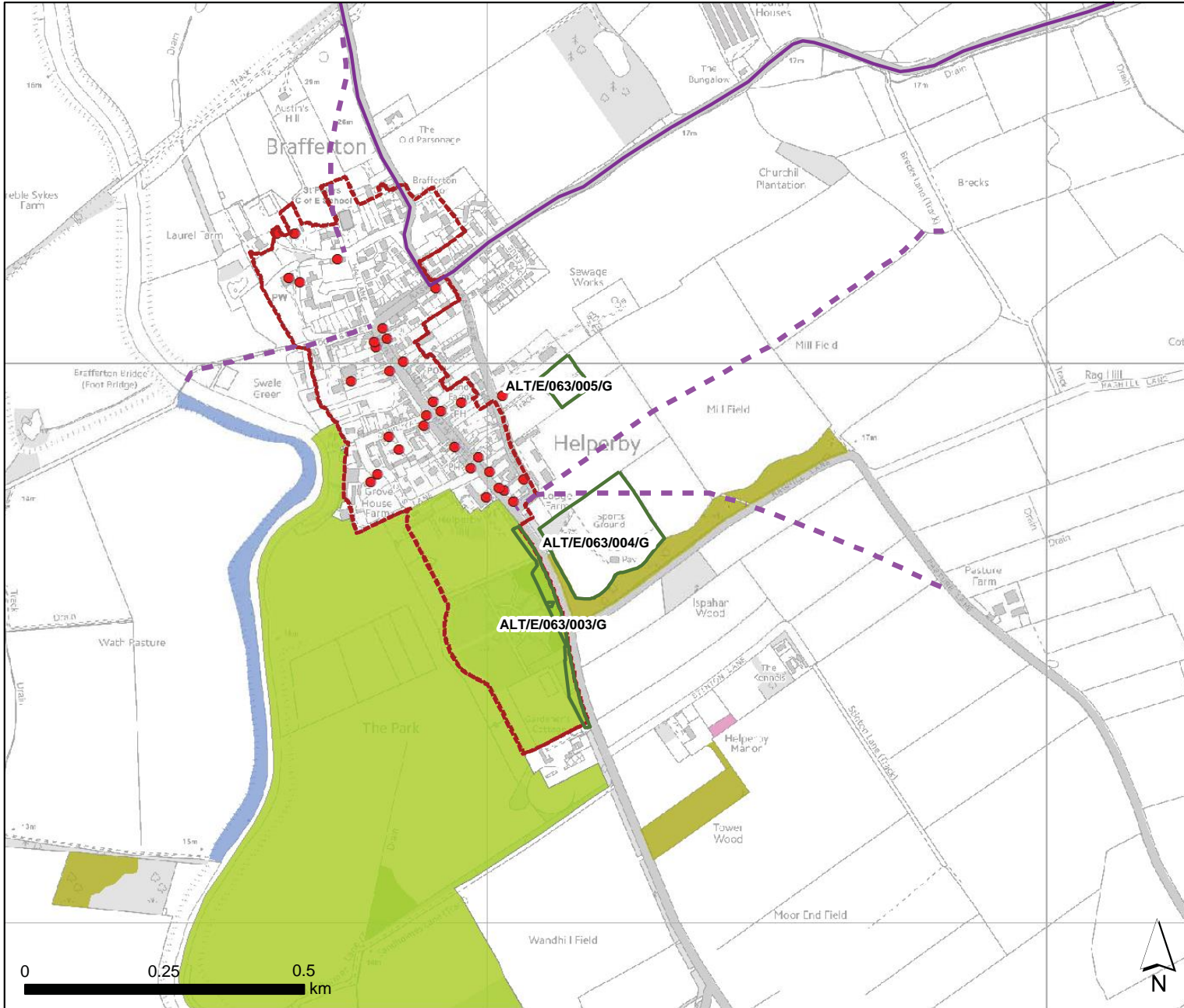
Great Crakehall



Key

-  LGS Nominated Site
-  PRoW
-  Listed Building
-  Park & Garden
-  Non Designated Parks & Gardens

Hackforth



Key

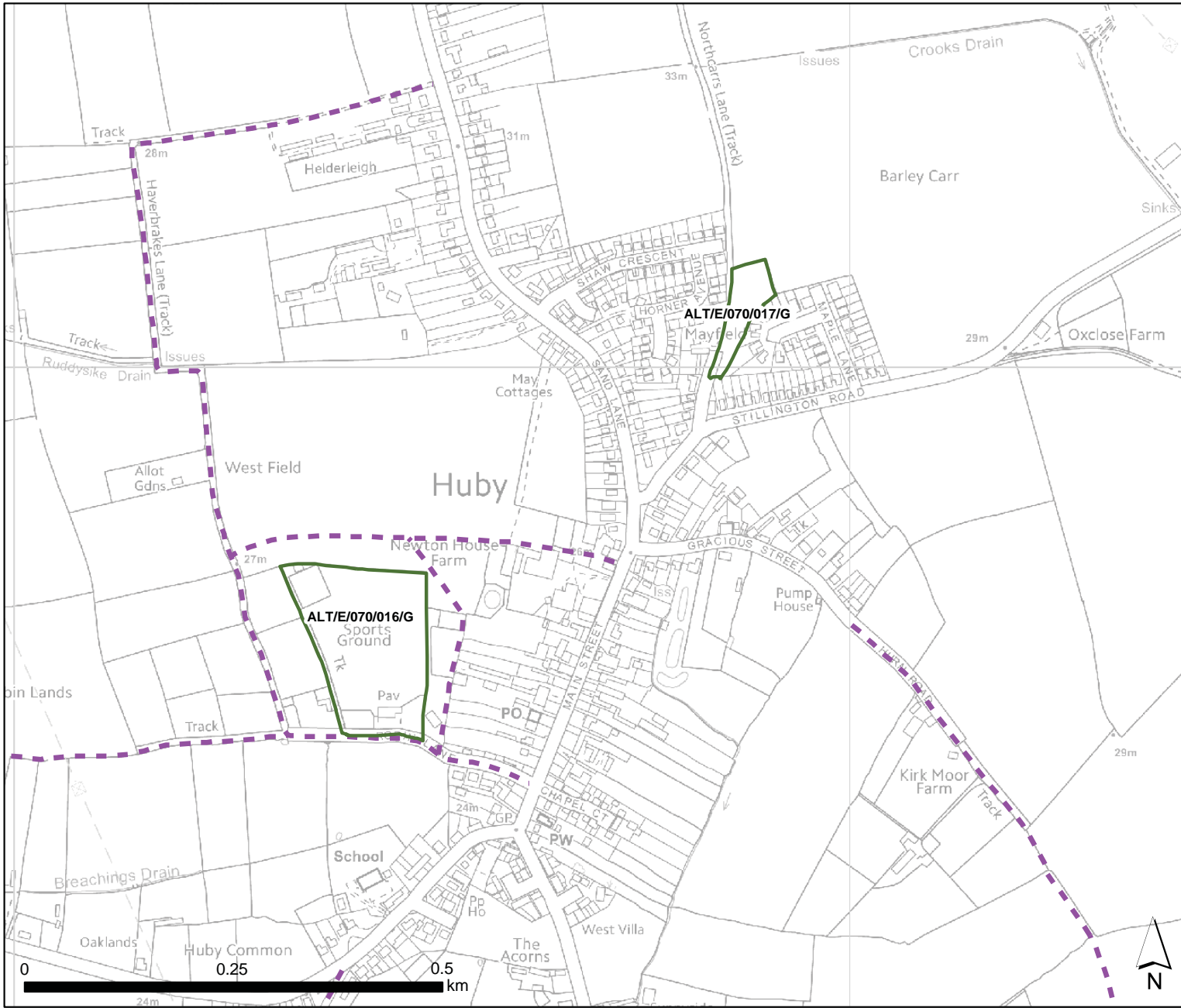
- LGS Nominated Site
- Sustrans National Route
- PRoW
- Conservation Areas
- Listed Building
- Non Designated Parks & Gardens

Priority Habitat Inventory



Main Habitat

- Coastal and floodplain grazing marsh
- Deciduous woodland
- Traditional orchard

Helperby



Key

-  LGS Nominated Site
-  PRoW

Huby

Key

LGS Nominated Site

PRoW

Conservation Areas

Listed Building

Non Designated Heritage Assets

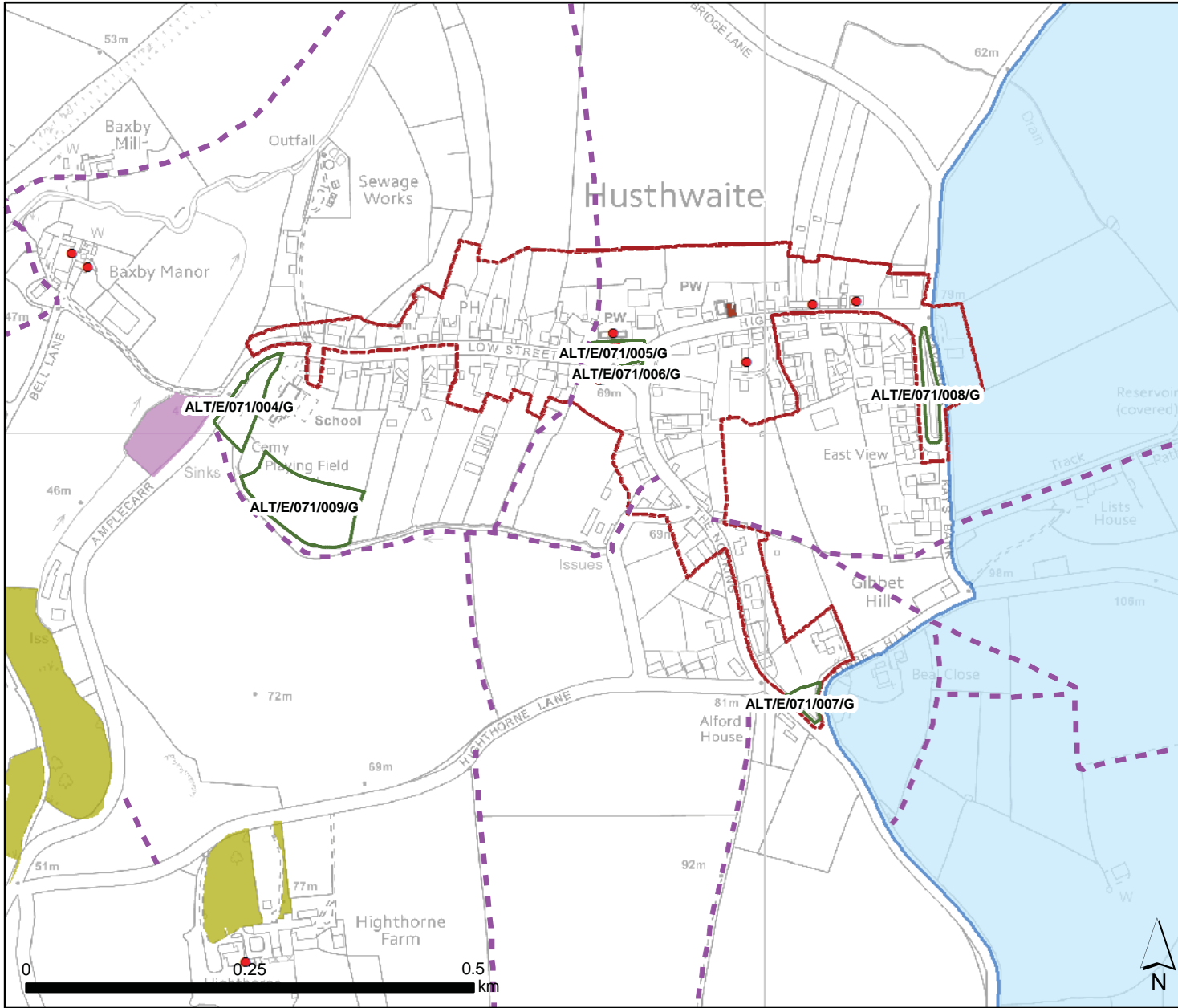
AONB

Priority Habitat Inventory

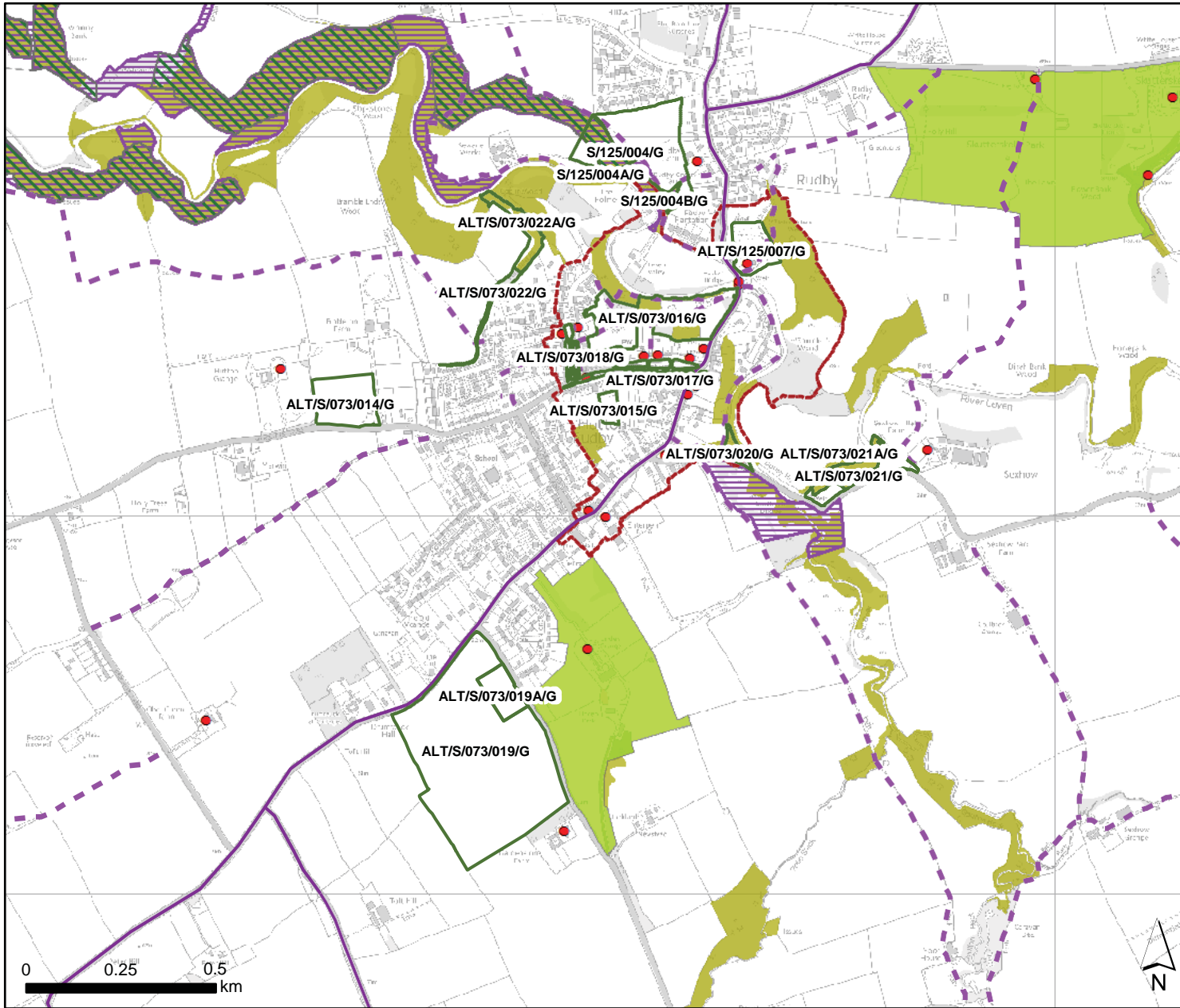
Main Habitat

Deciduous woodland

Good quality semi-improved grassland



Husthwaite



Key

- LGS Nominated Site
- Sustrans National Route
- PRoW
- Conservation Areas
- Listed Building
- Non Designated Parks & Gardens
- Ancient Semi Natural Woodland
- SINC

Priority Habitat Inventory

Main Habitat

- Deciduous woodland
- Traditional orchard

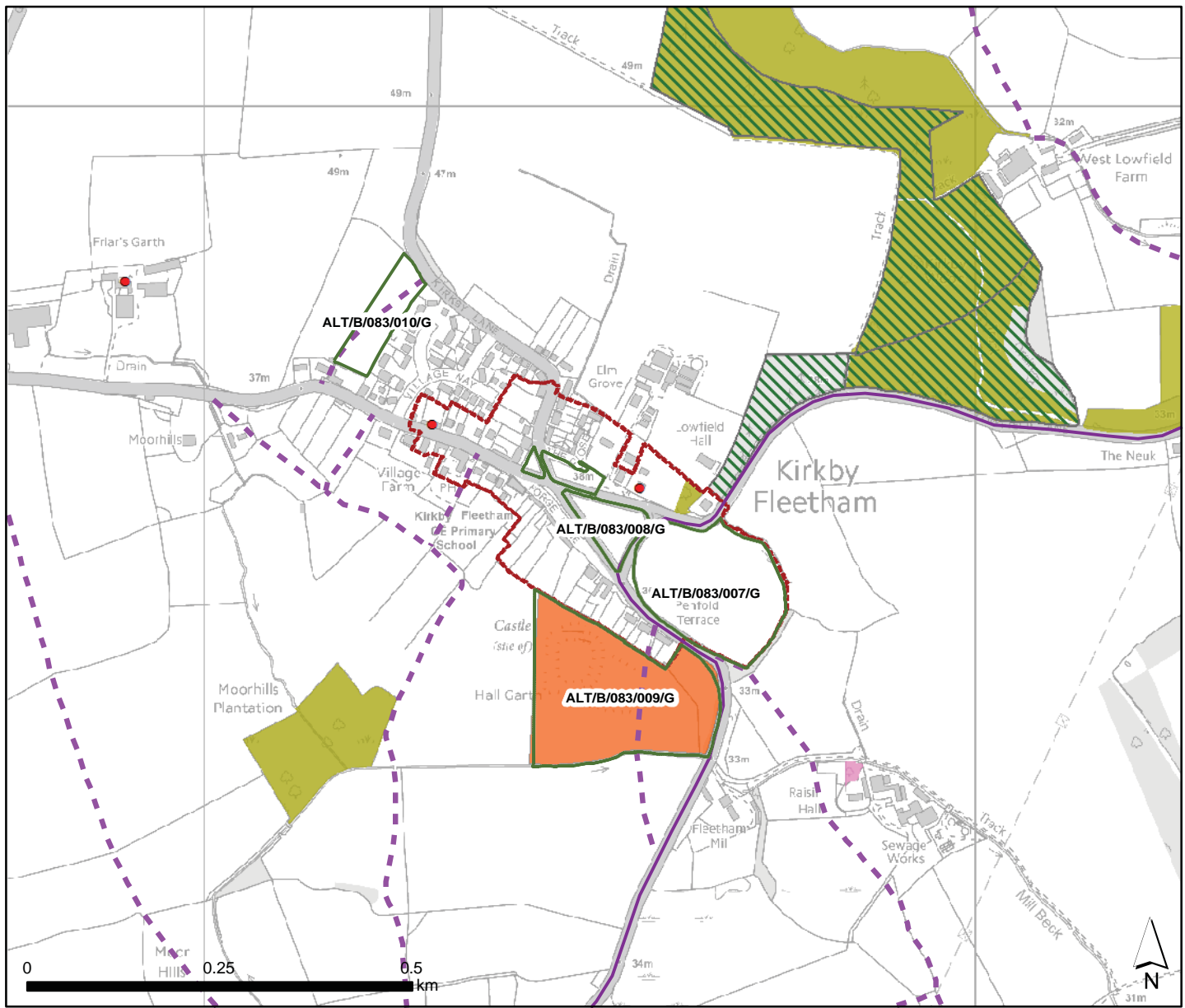
Key

-  LGS Nominated Site
-  Sustrans National Route
-  PRoW
-  Conservation Areas
-  Listed Building
-  Scheduled Monument
-  Ancient Semi Natural Woodland

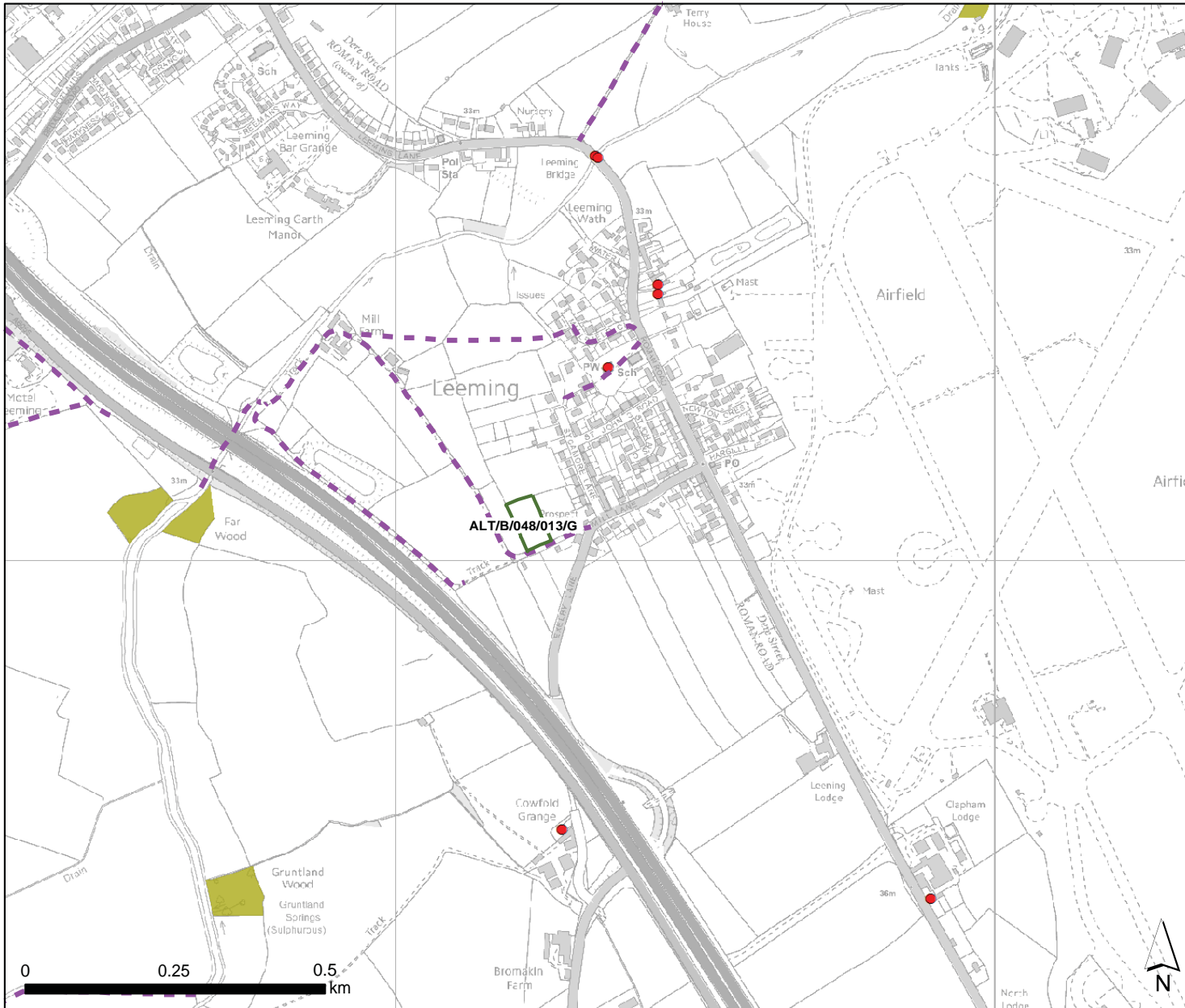
Priority Habitat Inventory

Main Habitat

-  Deciduous woodland
-  Traditional orchard



Kirkby Fleetham



Key

- LGS Nominated Site
- PRoW
- Listed Building

Priority Habitat Inventory

Main Habitat

- Deciduous woodland

Leeming

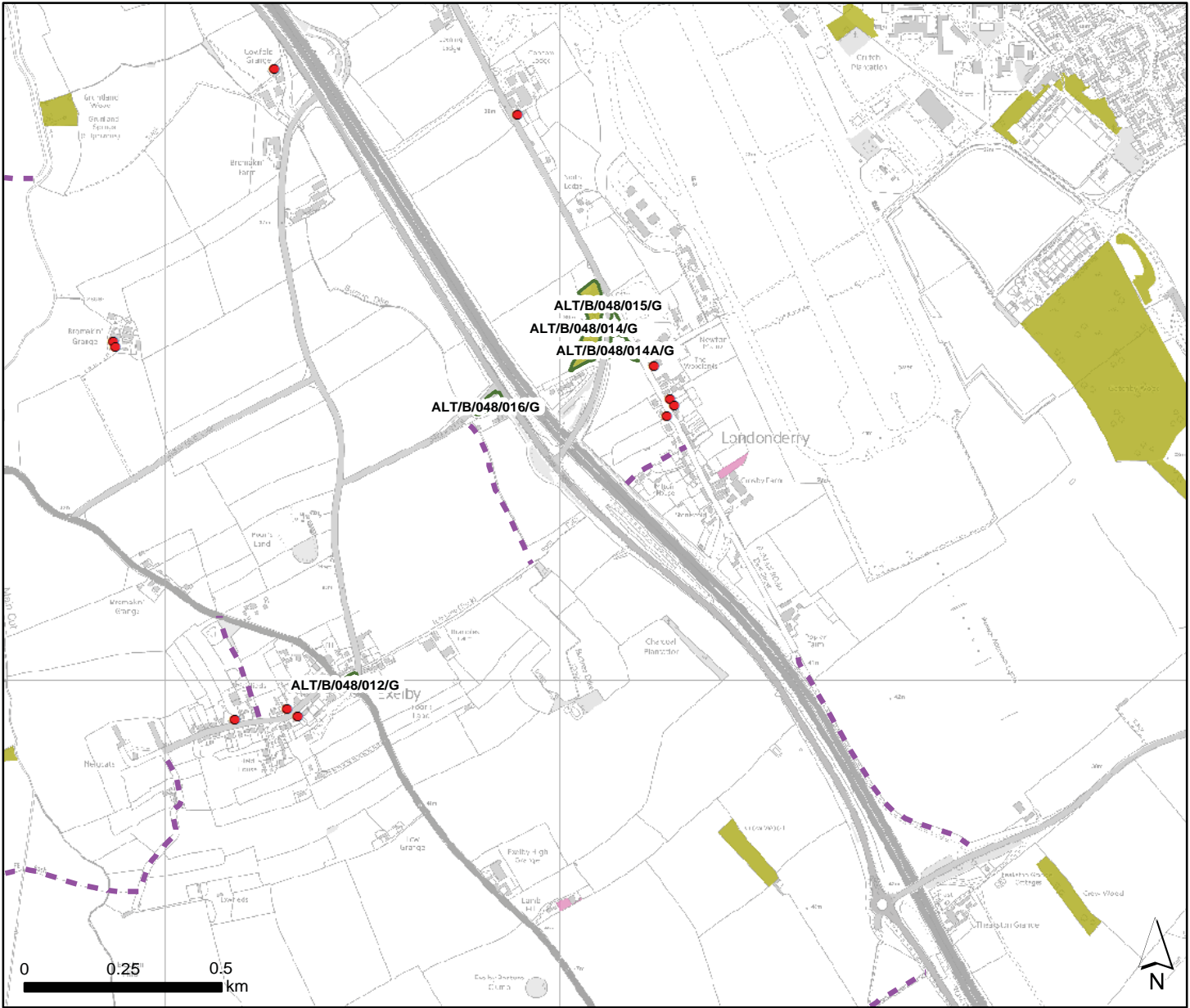
Key

- LGS Nominated Site
- PRoW
- Listed Building

Priority Habitat Inventory

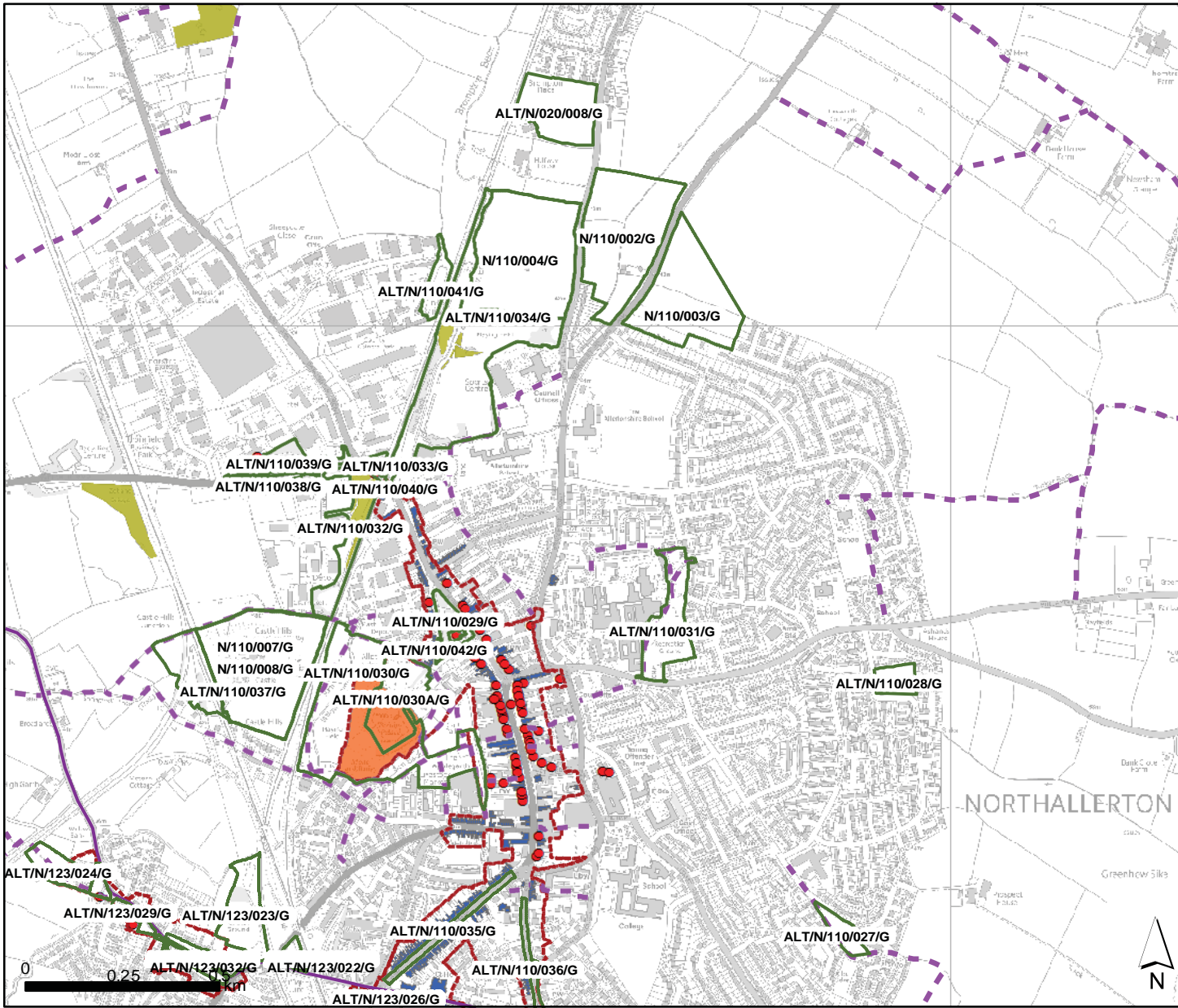
Main Habitat

- Deciduous woodland
- Traditional orchard



Londonderry & Exelby

PAGE INTENTIONALLY BLANK

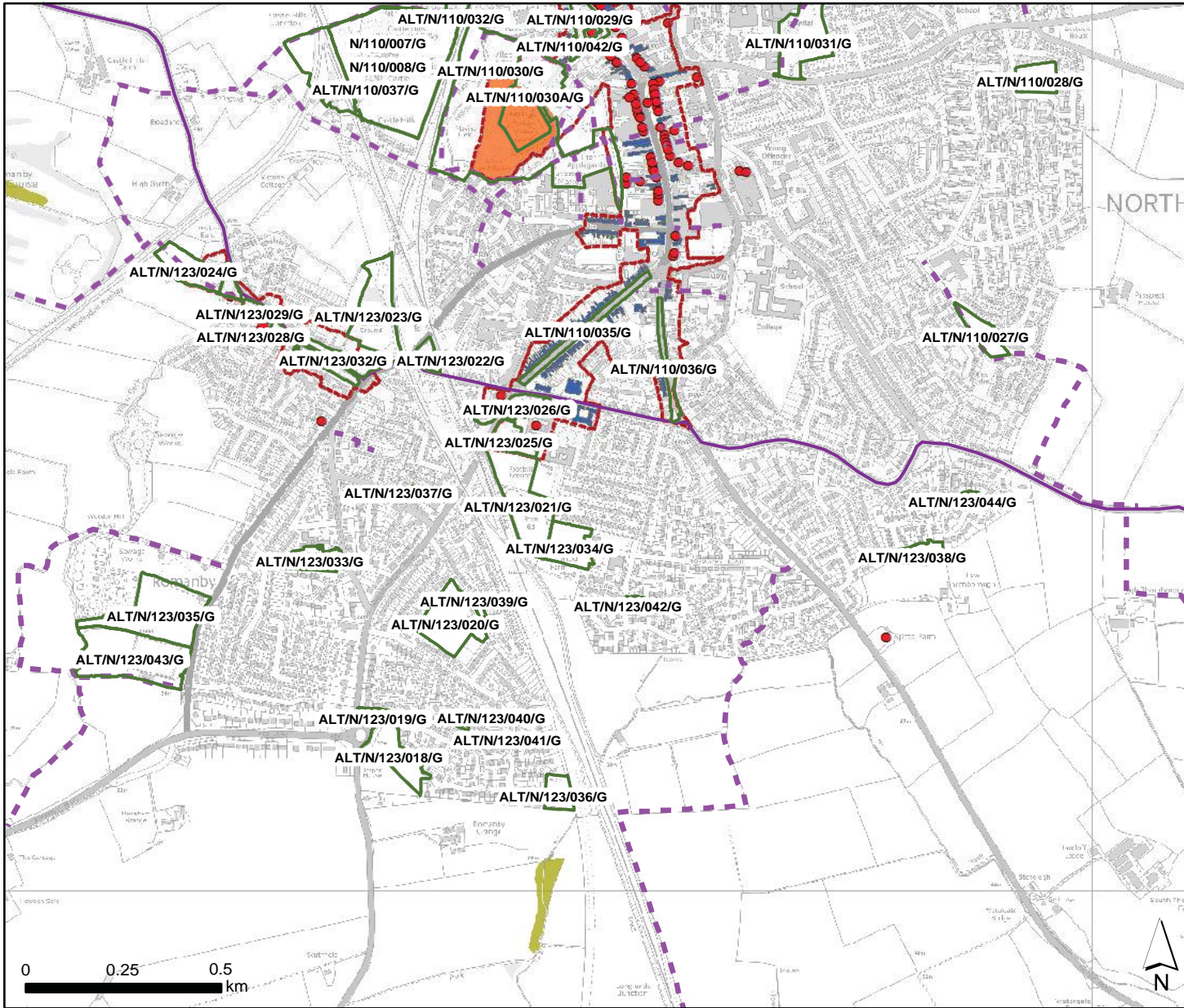


Key

- LGS Nominated Site
 - Sustrans National Route
 - PRoW
 - Conservation Areas
 - Listed Building
 - Scheduled Monument
 - Non Designated Heritage Assets
 - Buildings of Local Interest
- Priority Habitat Inventory**
- Main Habitat
- Deciduous woodland

NORTHALLERTON (NORTH)

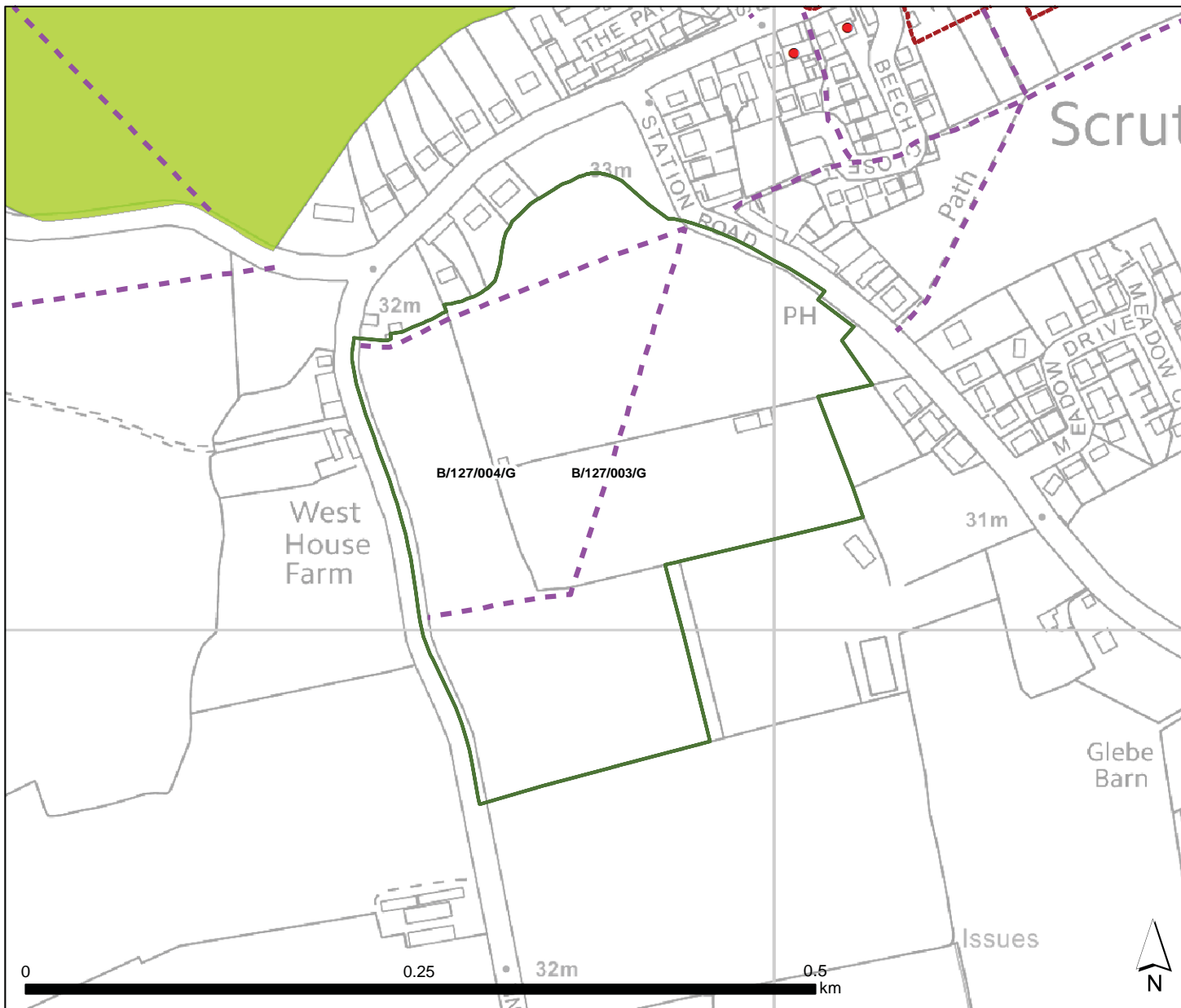
Northallerton North



Key

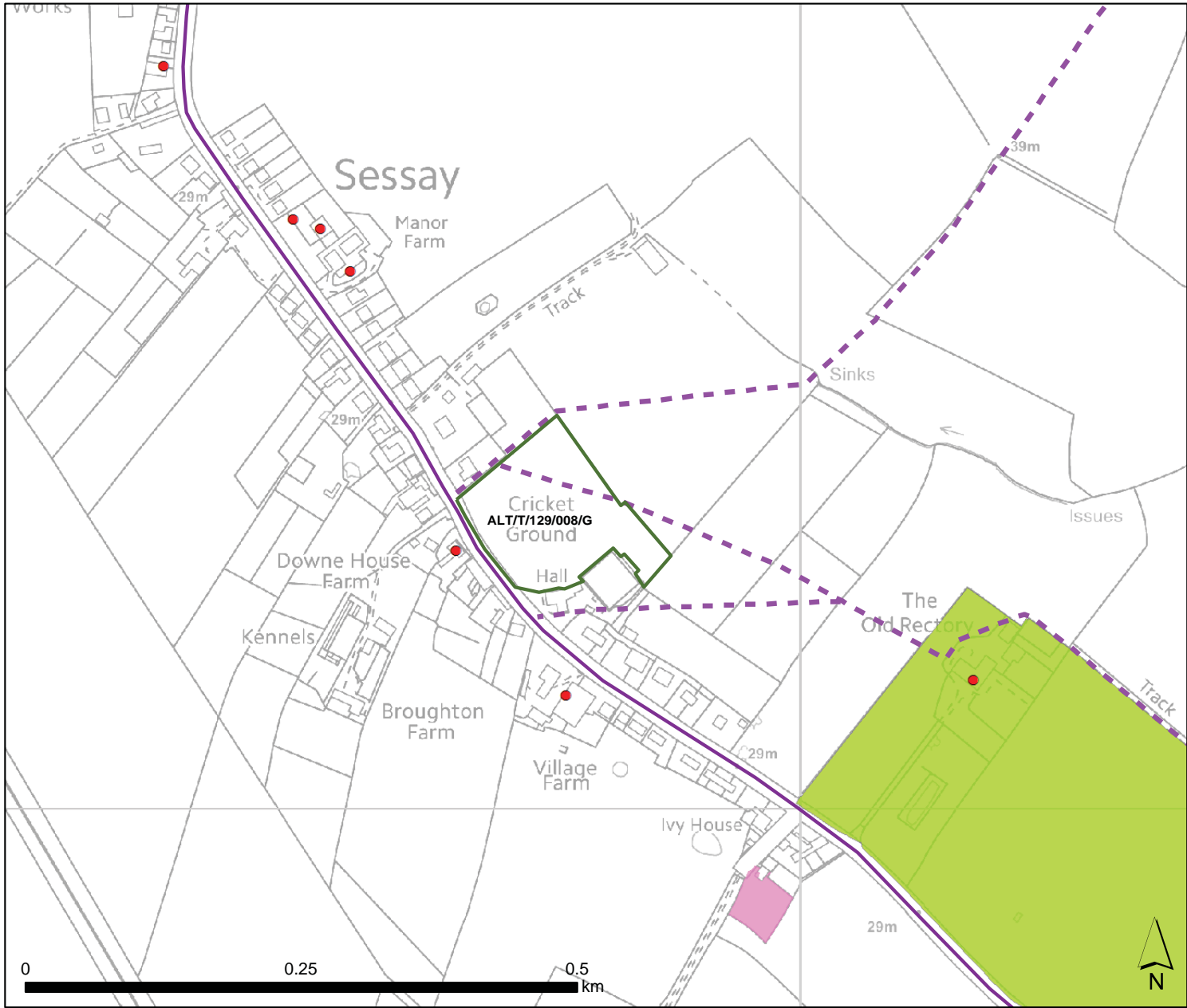
- LGS Nominated Site
 - Sustrans National Route
 - PRoW
 - Conservation Areas
 - Listed Building
 - Scheduled Monument
 - Non Designated Heritage Assets
 - Buildings of Local Interest
- Priority Habitat Inventory**
- Main Habitat
 - Deciduous woodland

Northallerton South



- Key**
- LGS Nominated Site
 - PRoW
 - Conservation Areas
 - Listed Building
 - Non Designated Parks & Gardens

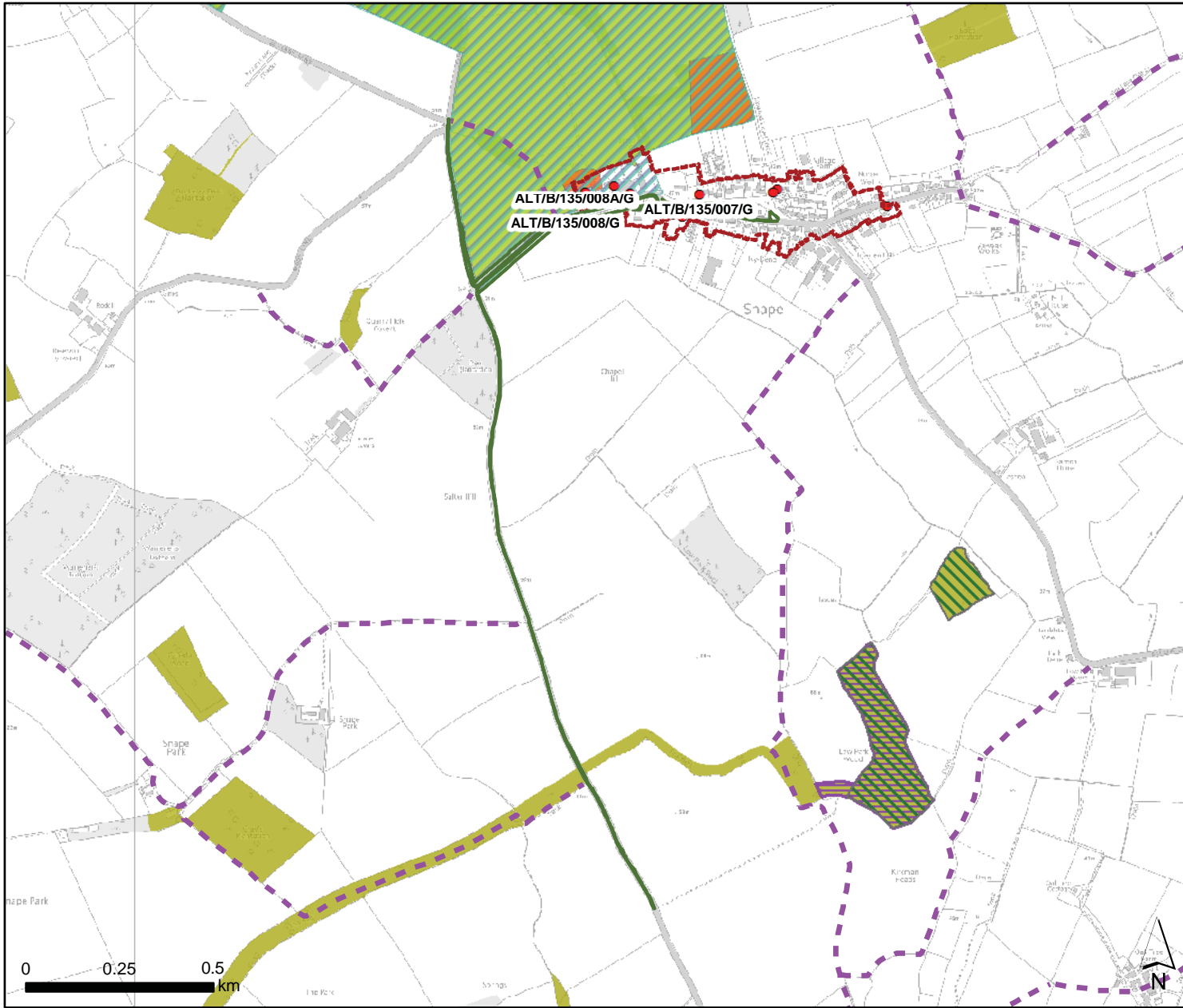
Scrutton



Key

- LGS Nominated Site
 - Sustrans National Route
 - PRow
 - Listed Building
 - Non Designated Parks & Gardens
- Priority Habitat Inventory**
- Main Habitat
- Traditional orchard

Sessay



Key

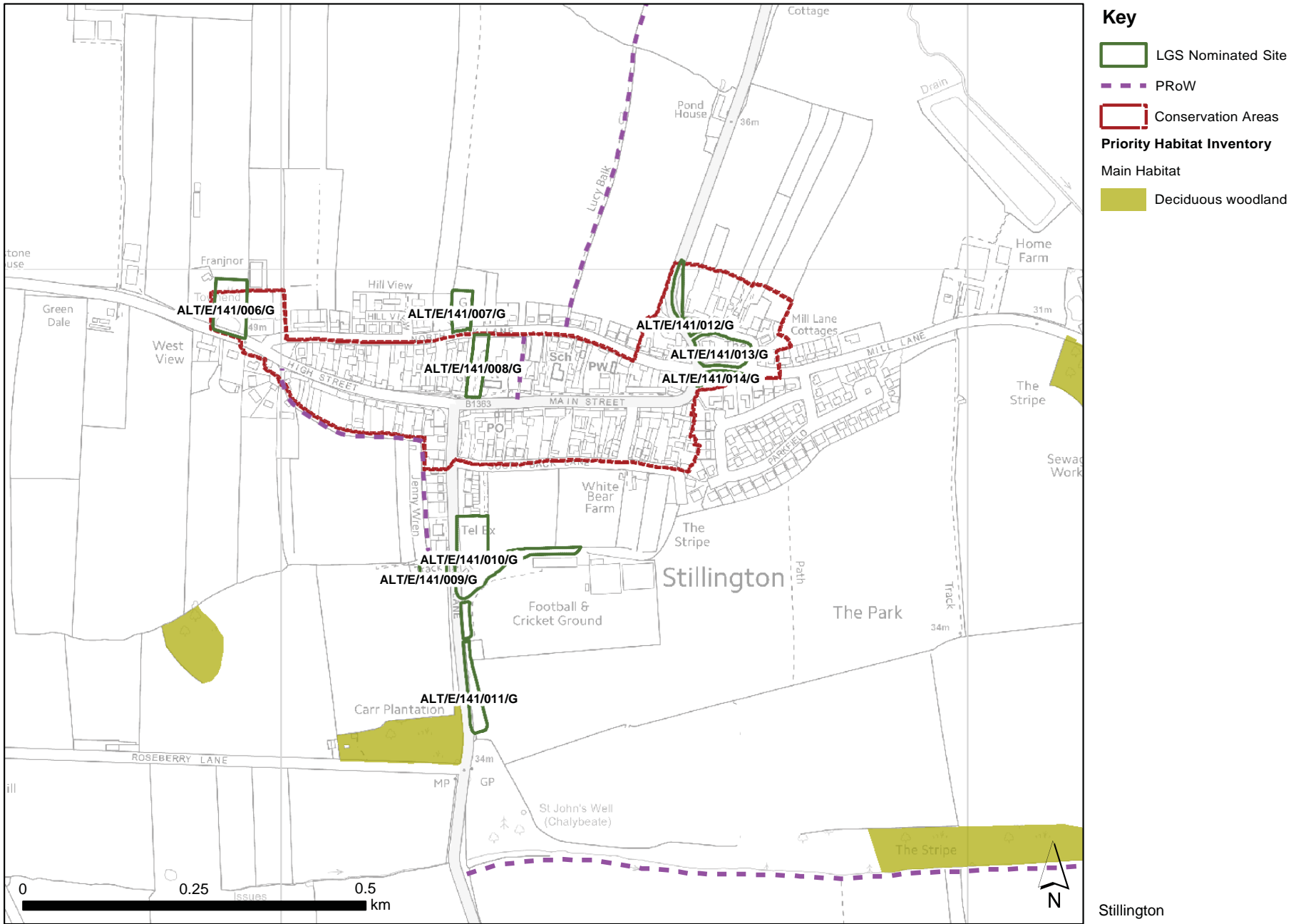
- LGS Nominated Site
- PRoW
- Conservation Areas
- Listed Building
- Park & Garden
- Scheduled Monument
- Non Designated Parks & Gardens
- Ancient Semi Natural Woodland
- SINCs

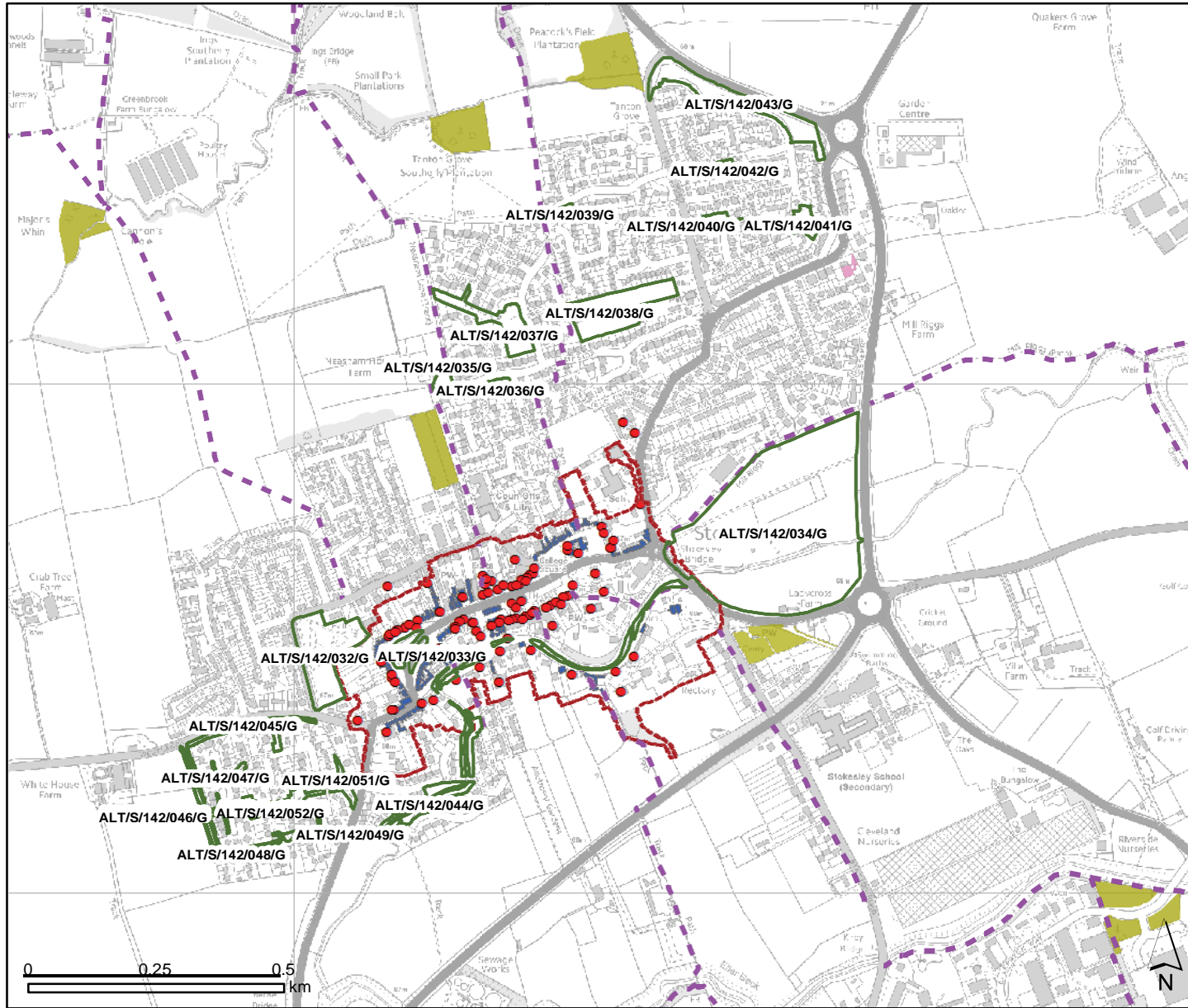
Priority Habitat Inventory

Main Habitat

- Deciduous woodland

Snape





Key

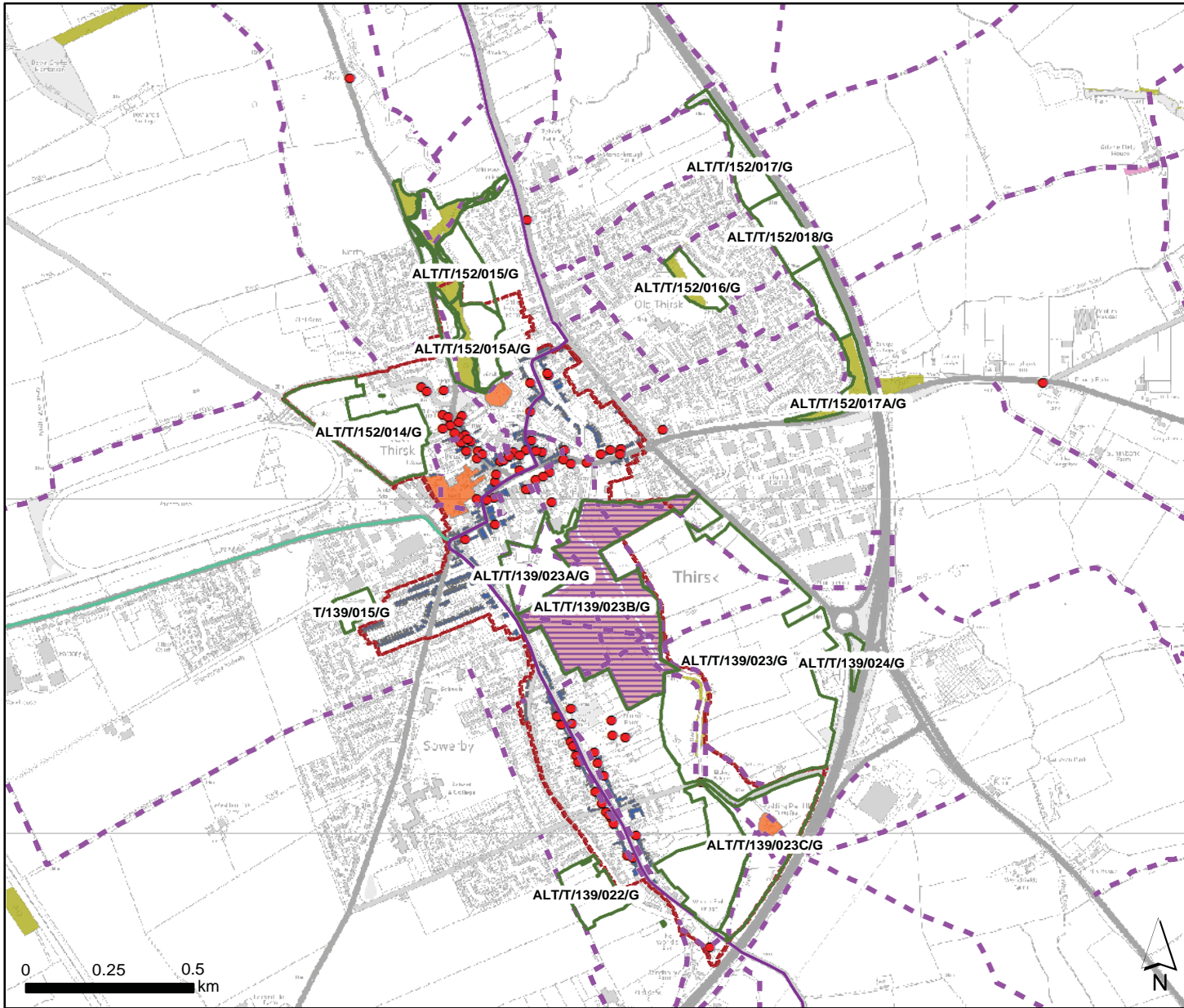
- LGS Nominated Site
- PRoW
- Conservation Areas
- Listed Building
- Buildings of Local Interest

Priority Habitat Inventory

Main Habitat

- Deciduous woodland
- Traditional orchard

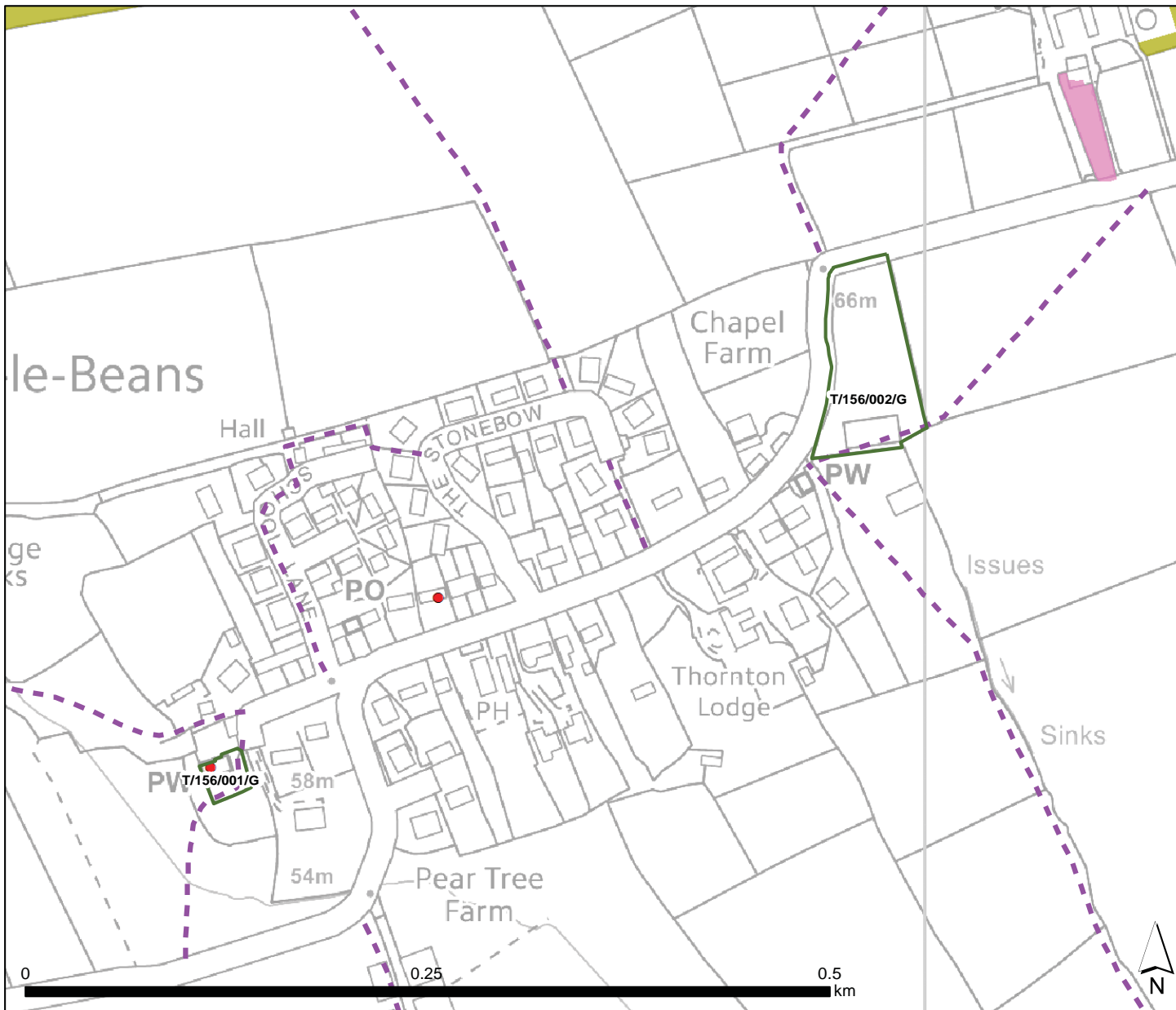
Stokesley



Key

- LGS Nominated Site
 - Sustrans National Route
 - Sustrans Link Route
 - PRoW
 - Conservation Areas
 - Listed Building
 - Scheduled Monument
 - Buildings of Local Interest
 - SINCs
- Priority Habitat Inventory**
- Main Habitat
- Deciduous woodland
 - Lowland fens

Thirsk



Key

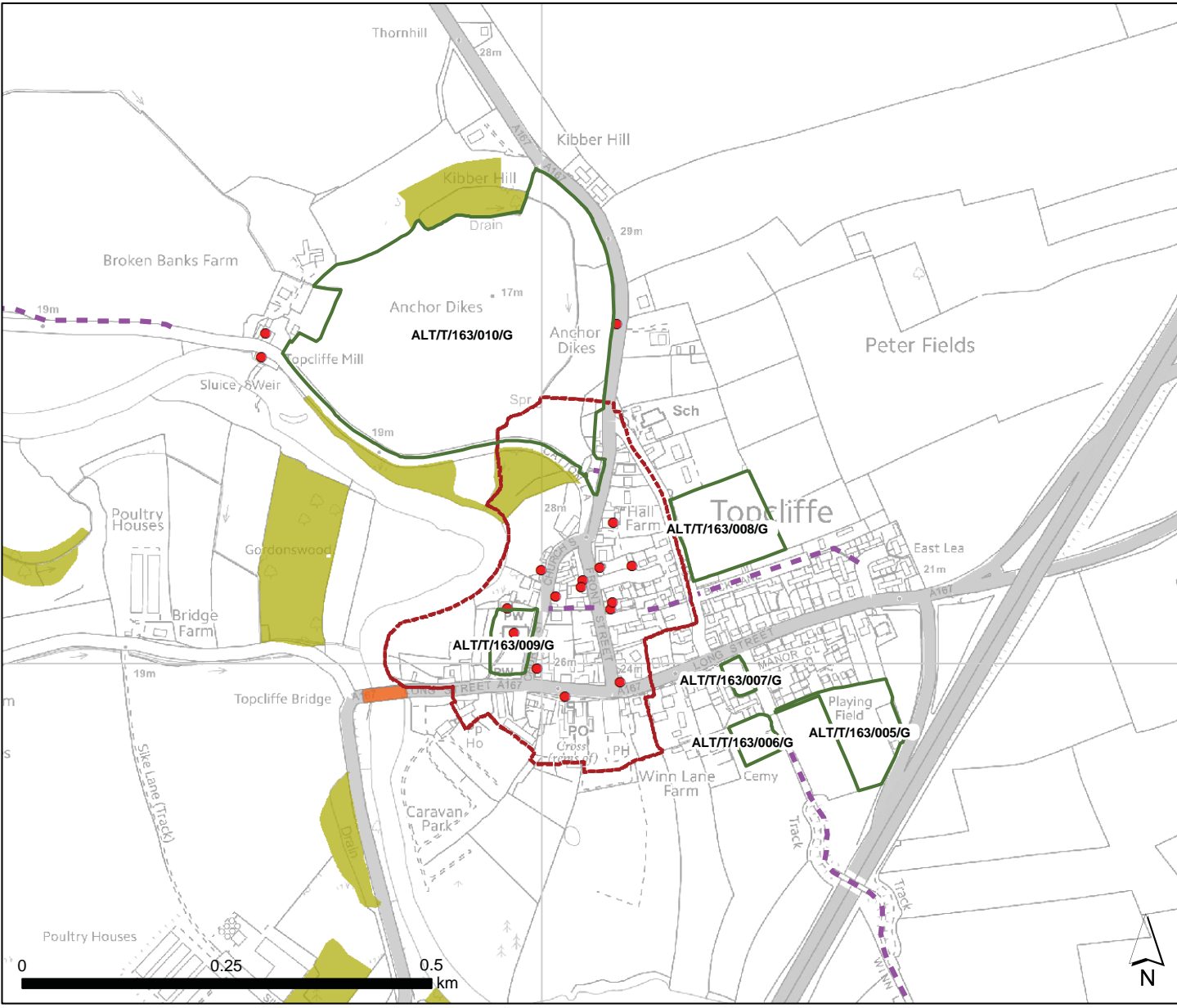
- LGS Nominated Site
- PRoW
- Listed Building

Priority Habitat Inventory

Main Habitat

- Traditional orchard

Thornton-le-Beans



Key

- LGS Nominated Site
- PRoW
- Conservation Areas
- Listed Building
- Scheduled Monument

Priority Habitat Inventory

Main Habitat

- Deciduous woodland

Topcliffe

4. PROPOSED SITE ALLOCATION SUMMARIES

(FOR PHASE 1 AND 2 SITES)

THESE SUMMARIES ARE FOR SITES THAT HAVE BEEN ASSESSED IN PHASES 1 AND 2 AND HAVE OUT TO PUBLIC CONSULTATION.

THE SUMMARIES ARE GROUPED ALPHABETICALLY BY SETTLEMENT.

BEDALE

Site Reference	Site Address	Recommendation	Reason for recommendation
ALT/B/004/026/G	Harry Bowes Wood and land Adjacent to the Wensleydale Railway, Bedale, North Yorkshire	Y	Richness of wildlife
ALT/B/004/027/G	Land at The Harbour, Next to the Bedale Beck, Bedale, North Yorkshire	N	No Local significance
ALT/B/004/028/G	Land at Aiskew Farm, The Bridge, Aiskew, North Yorkshire, DL8 1AW	N	Extensive
ALT/B/004/029/G	Land in front of Houses at Meadowfield, Aiskew, North Yorkshire	Y	Local recreational value
ALT/B/004/032/G	Land at Allotments, The Bridge, Aiskew Bank, Aiskew, North Yorkshire	Y	Local recreational value and historic significance
B/004/015/G	Oakwood Enterprises Big Sheep And Little Cow The Bridge Aiskew Bank Aiskew North Yorkshire DL8 1AW	N	Not locally significant
B/011/003/G	Bedale Hall Park North End Bedale North Yorkshire	Y	Beauty, historic significance, recreational value
B/011/004/G	Knabbs Quarry Masham Road Bedale North Yorkshire DL8 2SD	N	Recreational value, but landowner objection as part of consultation (permissive access for school only)
B/011/005/G	Bedale Allotment Association, The Allotment Gardens, Masham Road, Bedale, North Yorkshire	Y	Recreational value
B/011/006/G	Land Adjacent to Samwaies Court, The Bowling Green, Land South East of Wycar House and Land North of Bedale Bowls Club Wycar Bedale North Yorkshire	Y*	Partial designation - some sites highway verges (and therefore not suitable), others suitable in terms of recreational value and beauty
B/011/007/G	Land at the end of Parker Drive, Land at Stapleton Close and Land Adjacent to Peirse Close Bedale North Yorkshire DL8 2UG	Y*	Stapleton Close and Pierse Close are considered to have recreational value; *Parker drive is considered to be not locally significant
B/011/008/G	Play Area At Calvert Way Bedale North Yorkshire	Y	Recreational value
B/011/009/G	OS Fields 3876 & 5563, Bedale North Yorkshire	N	Not locally significant; planning permission for coach park
B/011/010/G	Bedale Park Golf Course North, South and South West Bedale North Yorkshire	N	Extensive
B/011/011/G	OS Field 5545, Playing Field, All Weather Pitch Bedale Leisure Centre, Bedale CoE Primary School Firby Road and Bedale High School, Playing Field and Outdoor Sports Area Fitzalan Road, Bedale, North Yorkshire	N	School grounds
B/011/012/G	Sewage Disposal Works South End Bedale North Yorkshire DL8 2DP	N	Not locally significant
B/011/013/G	St Gregorys Church North End Bedale North Yorkshire DL8 1AF	Y	Beauty, historic significance and tranquility
B/011/014/G	Football Ground Firby Road Bedale North Yorkshire	Y	Recreational value
B/011/015/G	Land at Oak Tree Drive Bedale North Yorkshire	Y	Recreational value
B/011/016/G	Mowbray School Masham Road Bedale North Yorkshire DL8 2SD	N	School grounds
B/011/018/G	Grassed area along the River, South End Village Green Harbour View Bedale North Yorkshire	Y	Beauty, historic significance, recreational value, tranquility and richness of wildlife
B/121/001/G	Bedale Athletic and Sports Association, Bedale, North Yorkshire DL8 1HA	Y	Recreational value

BRANDSBY

Site Reference	Site Address	Recommendation	Reason for recommendation
E/019/003/G	Recreational Area Brandsby North Yorkshire	N	Only play area part of site locally significant; site also located in AONB
E/019/003aG	Agricultural Area Brandsby North Yorkshire	N	Not locally significant

BROMPTON

Site Reference	Site Address	Recommendation	Reason for recommendation
ALT/N/020/008/G	Playing Field Land at Northallerton Rugby Club, Northallerton Road, Brompton, North Yorkshire	Y	Local recreational value
ALT/N/020/009/G	Land at Brompton Recreation Field and Play Area, Station Road, Brompton, North Yorkshire	Y	Local recreational value
ALT/N/020/010/G	Land At Water End, West of Bridge, Brompton, North Yorkshire	Y	Beauty, local recreational value and historic significance
ALT/N/020/011/G	Land At Water End, East of Bridge, Opp Cornerways, Brompton, North Yorkshire	Y	Beauty and local recreational value
ALT/N/020/012/G	Land at St Thomas's Church, Church View, Brompton, North Yorkshire	Y	Beauty and historic significance

CARLTON HUSTHWAITE

Site Reference	Site Address	Recommendation	Reason for recommendation
T/024/002/G	Village Hall Butt Lane Carlton Husthwaite YO7 2BQ	Y	Local recreational value

CRAKEHALL

Site Reference	Site Address	Recommendation	Reason for recommendation
ALT/B/032/006/G	10 Parcels of Land in Village Centre inc. The Green, Great Crakehall, North Yorkshire	Y	Beauty, local recreational value and historic significance
ALT/B/032/007/G	Amenity Land in Crakehall Beck, East of Bridge, Leyburn Road, Crakehall, North Yorkshire	Y	Beauty and richness of its wildlife
ALT/B/032/008/G	Recreation Area, Back Lane, Crakehall, North Yorkshire	Y	Local recreational value
ALT/B/032/009/G	Kiln Garth Wood, Little Crakehall, North Yorkshire	Y	Local recreational value and richness of its wildlife

EASINGWOLD

Site Reference	Site Address	Recommendation	Reason for recommendation
ALT/E/041/049/G	Communal Land Behind Hunters Close, Adjacent to Gate Grains Lane, Easingwold, North Yorkshire	Y	Local recreational value and richness of wildlife
ALT/E/041/050/G	Amenity Land To The Rear Of The Galtres Centre, Market Place, Easingwold, North Yorkshire	Y	Local recreational value
ALT/E/041/051/G	Land Including Cricket Ground and Recreation Area, Back Lane, Easingwold, North Yorkshire	Y	Local recreational value
ALT/E/041/052/G	Recreational Land, Millfield Lane, Easingwold, North Yorkshire	Y	Tranquility, local recreational value and richness of wildlife
ALT/E/041/053/G	Land at Mallison Hill, Adjacent to Oulston Road, Easingwold, North Yorkshire	Y	Local recreational value and richness of wildlife
ALT/E/041/054/G	Land to the South of Stonefield Avenue, East of Knott lane, Easingwold, North Yorkshire	N	Not demonstrably special
ALT/E/041/056/G	Land to the North Side of Sandholme Close, Easingwold, North Yorkshire	N	Not demonstrably special
ALT/E/041/057/G	Strip of Land to East Side and South Side of Large Field Adjacent to Easingwold Primary School	N	Not demonstrably special

GREAT BROUGHTON

Site Reference	Site Address	Recommendation	Reason for recommendation	Consultation responses / qualifications
ALT/S/057/017/G	Land Either Side of Electricity Sub Station, Kirkby Lane, Great Broughton, North Yorkshire	N	Not demonstrably special	
ALT/S/057/017A/G	Play Area, East of School, Kirkby Lane, Great Broughton, North Yorkshire	Y	Recreation	
ALT/S/057/018/G	Land Adjacent to Holme Beck, The Holme, Great Broughton, North Yorkshire	Y	Beauty	
ALT/S/057/019/G	Land At High Street Cross Roads, Great Broughton, North Yorkshire	Y	Beauty	
ALT/S/057/020/G	Land Either Side of/Including Kirkby & Great Broughton Primary School, Kirkby Lane, Great Broughton	N	Not special / school grounds	The site consists of school grounds (which are not suitable for designation) and two agricultural fields. The fields are not demonstrably special in terms of beauty, richness of wildlife, tranquillity (next to road and school), historic significance or recreational value.
ALT/S/057/021/G	Land Opp Cringle Cottage, Kirkby Lane, Great Broughton, North Yorkshire	N	Not demonstrably special	The site consists of an agricultural field. The field is not demonstrably special in terms of beauty, richness of wildlife, tranquillity (next to road), historic significance or recreational value.
ALT/S/057/022/G	Millennium Wood, West of The Holme, Great Broughton, North Yorkshire	N	commercial forestry plantation which does not have public access or richness of wildlife	Objection as commercial plantation with no public access
ALT/S/057/022A/G	Millennium Wood, excluding Comm.Plant, west of the Holme, Great Broughton, North Yorkshire	Y	Richness of wildlife	
ALT/S/057/024/G	Land to the West of Broughton Beck, North of Kirkby lane, Great Broughton, North Yorkshire	N	Not demonstrably special	

GREAT AYTON

Site Reference	Site Address	Recommendation	Reason for recommendation
ALT/S/058/020/G	Land at the Bowling Green, Between River Leven and Little Ayton Lane, Great Ayton, North Yorkshire	Y	Recreational Value
ALT/S/058/021/G	Land Inc Cricket Field, Playing Fields, Tennis Courts, West of River, Great Ayton, North Yorkshire	Y	Recreational Value
ALT/S/058/022/G & 022A/G	Land Adjacent to Ayton House, Easby Lane, Great Ayton, North Yorkshire	Y	Note: duplicate of 032/G
ALT/S/058/023/G	Land South of River to Cricket Field, Adj Greenbank, Great Ayton, North Yorkshire	Y	Recreational value and likely to have historic interest
ALT/S/058/024/G	Land South of Levenside, Next to Tennis Courts, West Terrace, Great Ayton, North Yorkshire	N	Not locally special
ALT/S/058/025/G	The Green, Low Green, Great Ayton, North Yorkshire	Y	Beauty, recreational value and historic significance
ALT/S/058/026/G	Land Including Cemetery and Play Area, Adj to Yatton House, Guisborough Rd, Great Ayton	Y	Recreational value
ALT/S/058/027/G	Land Either Side of Entrance to Langbaugh Close, Great Ayton, North Yorkshire	N*	Recreational value; *however, NYCC Highways objection
ALT/S/058/028/G	Land Adjacent to A173 and B1292, Great Ayton, North Yorkshire	Y	Recreational value
ALT/S/058/029/G	Allotment Gardens, B1292, Great Ayton, North Yorkshire	Y	Recreational value
ALT/S/058/030/G	Land In Front of Ayton Hall, Low Green, Great Ayton, North Yorkshire	N	Not local - private
ALT/S/058/031/G	Land Inc Tennis Courts, South East Side Of Levenside, Great Ayton, North Yorkshire	Y	Recreational value
ALT/S/058/031B/G	The Buck car park, opp West Terrace, Great Ayton, North Yorkshire	N	This is the pub 'overspill' car park is not demonstrably special
ALT/S/058/032/G	Land at Easby Lane, Inc Multiple Properties, Great Ayton, North Yorkshire (see 058/022 & 058/022a)	Y	Historic interest
ALT/S/058/033/G	Land In Front of 2 High Street, Great Ayton, North Yorkshire	N	Not demonstrably special
ALT/S/058/034/G	Land Adjacent to 20 High Street, Great Ayton, North Yorkshire	N	Not demonstrably special
ALT/S/058/035/G	The Green, High Green, High Street, Great, Ayton North Yorkshire	Y	Recreational value and historic significance
ALT/S/058/036/G	Land In Front of Leven Court, Adj to Bowling Green, Little Ayton Lane, Great Ayton, North Yorkshire	Y	Recreational value
ALT/S/058/037/G	Land to the West of High Green, High street, Great Ayton, North Yorkshire	Y	Recreational value and historic significance

HACKFORTH

Site Reference	Site Address	Recommendation	Reason for recommendation
ALT/B/062/003/G	Part of OS Field 2839, Opp Allotments, North Road, Hackforth, North Yorkshire	N	Not demonstrably special - part of a larger agricultural field
ALT/B/062/004/G	Land Stretching from Allotments to Bowbridge Beck, North Road, Hackforth, N. Yorkshire	Y* - Part	The majority of the site is not demonstrably locally special - it is part of a larger agricultural field; *part (land at allotments) has recreational value and is suitable for designation

HELPERBY

Site Reference	Site Address	Recommendation	Reason for allocation
ALT/E/063/003/G	Strip of Land to the Front of The Park, Main Street, Helperby, North Yorkshire	N	The section of site proposed is not more demonstrably special than the surrounding area of historic landscape
ALT/E/063/004/G	The Sports Ground, Opp The Park, Main Street, Helperby North Yorkshire YO61 2PL	Y	Recreational value
ALT/E/063/005/G	Land at the Allotments, Back Lane, Helperby, North Yorkshire	Y	Recreational value

HUBY

Site Reference	Site Address	Recommendation	Reason for recommendation
ALT/E/070/016/G	Recreation Ground, Robin Lane, Huby, North Yorkshire	Y	Recreational value
ALT/E/070/017/G	Land Behind Maple Croft, Tally Hill, Huby, North Yorkshire	Y	Recreational value and richness of wildlife

HUSTHWAITE

Site Reference	Site Address	Recommendation	Reason for recommendation
ALT/E/071/004/G	Husthwaite Cemetery, Low Street, Husthwaite, North Yorkshire	Y	Historic significance and tranquility
ALT/E/071/005/G	Land to the Front of St Nicholas' Church, High street, Husthwaite, North Yorkshire	Y	Historic significance and tranquility
ALT/E/071/006/G	Land At The Nookin, Opp St Nicholas' Church, Low Street, Husthwaite, North Yorkshire	Y	Historic significance and informal recreation
ALT/E/071/007/G	Land at The Nookin, Opposite Drake House, to the South of Husthwaite, North Yorkshire	N	Highway verge
ALT/E/071/008/G	Land at Kays Bank, Opposite Old Vicarage, Husthwaite, North Yorkshire	Y	Recreational value
ALT/E/071/009/G	Outdoor Sports Area, rear of C of E Primary School, Husthwaite, North Yorkshire	Y	Recreational value

HUTTON RUDBY

Site Reference	Site Address	Recommendation	Reason for recommendation
S/125/004	Bank Wood Blue Barn Lane and OS Fields 0006 and 0100 Rudby Bank Hutton Rudby North Yorkshire	N	Not demonstrably special and in private ownership
S/125/004A/G	Wooded Area North of River Leven, Section of Bank Wood, Rudby, North Yorkshire	Y	Richness of wildlife and tranquility
S/125/004B/G	Wooded Area East of River Leven, Rudby, North Yorkshire	Y	Richness of wildlife and tranquility
ALT/S/073/014/G	Hutton Rudby Cricket Ground, Garbutts Lane, Hutton Rudby, North Yorkshire	Y	Recreational value
ALT/S/073/015/G	Allotment Gardens, Goldie Hill, Hutton Rudby, North Yorkshire	Y	Recreational value
ALT/S/073/016/G	Land South of River Leven, Hutton Bank, Hutton Rudby	Y	Recreational value, historic significance and richness of wildlife
ALT/S/073/017/G	Land Including/Surrounding Village Green, South Side, Hutton Rudby, North Yorkshire	Y	Historic significance, recreational value and beauty
ALT/S/073/018/G	Land At North End, Hutton Rudby, North Yorkshire	Y	Historic significance, recreational value and beauty
ALT/S/073/019/G	Northern Section of OS Field 4548, Belbrough Close, Hutton Rudby, North Yorkshire	N	The site is agricultural and not demonstrably special
ALT/S/073/019A/G	Hutton Rudby Sports Area, Station Lane, Hutton Rudby, Stokesly, North Yorkshire	Y	Recreational value
ALT/S/073/020/G	Section of Woodland Between Sexhow Lane and River Leven, Hutton Rudby, North Yorkshire	Y	Recreational value
ALT/S/073/021/G	Land South of River Leven, north of Sexhow Lane, Hutton Rudby, North Yorkshire	N	Private, not demonstrably special
ALT/S/073/021B/G	Woodland South of River Leven, north of Sexhow Lane, Hutton Rudby, North Yorkshire	Y	Richness of wildlife
ALT/S/073/022/G	Land Along Hundale Gill, Running North to River Leven, Hutton Rudby, North Yorkshire	N	Private, no access
ALT/S/073/022A/G	Wooded Area Along Hundale Gill, Running North to River Leven, Hutton Rudby, North Yorkshire	Y	Richness of wildlife
ALT/S/125/007/G	Land at All Saints' Church, Incl Moat, Rudby Bank, Hutton Rudby, North Yorkshire	Y	Historic significance

KIRKBY FLEETHAM

Site Reference	Site Address	Recommendation	Reason for recommendation
ALT/B/083/007/G	Land Opposite The Green, Lowfield Lane, Kirkby Fleetham, North Yorkshire	Y	Historic significance
ALT/B/083/008/G	3 Parcels of Land at Village Green, Village View and GP, Kirkby Fleetham, North Yorkshire	Y	Beauty, recreational value and historic significance
ALT/B/083/009/G	Land at Castle (site of), Fleetham Lane, Kirkby Fleetham, North Yorkshire	Y	Historic significance
ALT/B/083/010/G	Land Between Calton House and Kirkby Lane, Kirkby Fleetham, North Yorkshire	N	Not demonstrably special

LEEMING

Site Reference	Site Address	Recommendation	Reason for recommendation
ALT/B/048/013/G	Recreational Land, Mill Lane, Leeming, North Yorkshire	Y	Recreational value

LONDONDERRY & EXELBY

Site Reference	Site Address	Recommendation	Reason for recommendation
ALT/B/048/014/G	Crows Wood, Londonderry, North Yorkshire	Y	Richness of wildlife
ALT/B/048/014A/G	Crows Wood, Land Opposite Exelby Services Ltd, Londonderry, North Yorkshire	N	Not demonstrably special
ALT/B/048/015/G	Triangle of Land Adjacent to Crows Wood, Londonderry, North Yorkshire	N	Not demonstrably special
ALT/B/048/016/G	Plot of Land in Front of the Houses in Green Gate Lane, Londonderry, North Yorkshire	N	Not demonstrably special
ALT/B/048/012/G	Exelby Village Green, Tofts Lane, Exelby, North Yorkshire	Y	Local recreational value and historic significance

NORTHALLERTON

Site Reference	Site Address	Recommendation	Reason for recommendation	Amendments due to consultation responses / additional information & comments
N/110/002/G	Land Off Stokesley Road Northallerton North Yorkshire	N	Not demonstrably special	
N/110/003/G	Land North of Mowbray Road East Side Of Stokesley Road Northallerton North Yorkshire	N	Not demonstrably special	
N/110/004/G	Land to the South of Halfway House Northallerton Road Brompton North Yorkshire	N	Not demonstrably special	
N/110/008/G N/110/007/G	Castle Hills Farm Castle Hills Springwell Lane Northallerton North Yorkshire DL7 8UR	Y	Historic interest	
ALT/N/110/027/G	Land At Knotto Bottom Lane, Valley Road, Northallerton, North Yorkshire	Y	Recreational Value	
ALT/N/110/028/G	Recreational Land, Bankhead Road, Northallerton, North Yorkshire	Y	Recreational value	
ALT/N/110/029/G	Land at All Saints Parish Church, High Street, Northallerton, North Yorkshire	Y	Beauty, recreational value and historic significance	
ALT/N/110/030/G	Large Plot of Land East of Railway Line, Between Springwell Lane and Tannery Lane, Northallerton	Y	Recreational value	
ALT/N/110/030A/G	Land surrounding cemetery, East of Railway Line, Northallerton	Y	Historic significance, recreational value and richness of wildlife	
ALT/N/110/031/G	Land Opp Friarage Hospital, Bullamoor Memorial Park Recreation Ground, Forest Road, Northallerton	Y	Recreational value	
ALT/N/110/032/G	Large Plot of Land West of Railway Line, From Darlington Rd (N) to Cherrycroft (S), Northallerton	N	Not demonstrably special	
ALT/N/110/033/G	Land To The South Of Bridge End House, North Bridge, Darlington Road, Northallerton North Yorkshire	Y	Richness of wildlife (wildlife meadow)	
ALT/N/110/034/G	Land at Hambleton Leisure Centre/HDC, East of Railway Line, Northallerton, North Yorkshire	Y - Part*	Recreational value and richness of wildlife *part is an agricultural field and not special	
ALT/N/110/035/G	Land Along South Parade, Northallerton, North Yorkshire	N	Highway verges.	
ALT/N/110/036/G	Land Along Thirsk Road, Northallerton, North Yorkshire	N	highway verges	
ALT/N/110/037/G	Land at Castle Hills Farm Extending Across Two Rail Lines, Springwell Lane, Northallerton	Y - part*	Historic significance *boundary as N/110/008/G N/110/007/G	Is all of site special for historic interest? Is site boundary N/110/008/G more appropriate?
ALT/N/110/038/G	Land Adjacent to Barkers Ltd and Pond, Yafforth Road, Northallerton, North Yorkshire	N	Not demonstrably special	
ALT/N/110/039/G	Land Adjacent The Mount, Yafforth Road, Northallerton, North Yorkshire	N	Private land - not demonstrably special	No evident historic or wildlife value
ALT/N/110/040/G	Land at Low Gate Signal Box, Darlington Road, Northallerton, North Yorkshire	N	Not demonstrably special	
ALT/N/110/041/G	Land to the Rear of Omega Business Village, Surrounding Pond, Adjacent to Railway, Northallerton	N	Not demonstrably special	
ALT/N/110/042/G	Land Opposite All Saints Parish Church, High Street, Northallerton, North Yorkshire	Y	Historic significance and recreational value	
ALT/N/123/018/G	Land Adjacent to Roundabout, South Oaktree Drive, Northallerton, North Yorkshire	Y	Recreational value and richness of local wildlife	

NORTHALLERTON (CNTD)

ALT/N/123/019/G	Land Adjacent to Roundabout, North of Oaktree Drive, Romanby, Northallerton, North Yorkshire	Y	Recreational value	
ALT/N/123/020/G	Land at Northallerton Cricket Ground, Farndale Avenue, Romanby, North Yorkshire DL7 8SN	N	The site has obvious recreational value but the landowners object to its designation	Owners are not supportive of designation and access is controlled - withdraw recommendation for designation (even though site has recreational interest)?
ALT/N/123/021/G	Recreation Ground to the Rear of County Hall, Boroughbridge Road, Northallerton, North Yorkshire	N	School playing field	As the site is a school playing field, designation is not supported.
ALT/N/123/022/G	Allotment Gardens, Opp Level Crossing, Romanby Road, Northallerton, North Yorkshire	Y	Recreational value	
ALT/N/123/023/G	Land Adjacent to the Railway Line, South of Willow Beck, Ainderby Road, Romanby, North Yorkshire	N	Not demonstrably special	As the site is private and the owners object to designation, its value for recreation is not supported. While the site does appear to have interest for wildlife, its is also agreed that its wildlife value is limited. LGS designation is not supported in this case.
ALT/N/123/024/G	Land Between Romanby Bridge and the Railway Line, Yafforth Rd, Romanby, North Yorkshire	Y - part*	Part of site not locally special (agricultural field), *part has recreational value	
ALT/N/123/025/G	Land to the Front of County Hall, Boroughbridge Road, Northallerton, North Yorkshire	N	NYCC Operational land	As the site may not potentially endure beyond the plan period, LGS designation is not supported.
ALT/N/123/026/G	Land to the Front of County Hall, Racecourse Lane, Northallerton, North Yorkshire	N	NYCC Operational land	As the site may not potentially endure beyond the plan period, LGS designation is not supported.
ALT/N/123/027/G	Land to the Front of Northallerton Station, Boroughbridge Road, Northallerton, North Yorkshire	N	Site has recreational value - but assumed to potentially be operational land	Operational railway land? No objection from landowners?
ALT/N/123/028/G	Plot of Land to the Front of Property Nos 48/50, The Green, Romanby, North Yorkshire	Y	Land either forms part of the village green or the setting for the village green. Designation is suitable on the grounds of recreational value	
ALT/N/123/029/G	Plot of Land Covering Property Nos 54/60, The Green, Romanby North Yorkshire	N	Private garden - not demonstrably special	

SCRUTON

Site Reference	Site Address	Recommendation	Reason for recommendation
B/127/004/G	OS Field 0002, 0010 & 0017 Station Road and OS Field 7910 Hamhall Lane Scruton North Yorkshire	N	Not demonstrably special

SESSAY

Site Reference	Site Address	Recommendation	Reason for recommendation
ALT/T/129/008/G	Land at Sessay Cricket Ground, Main Street, Sessay, North Yorkshire	Y*	Planning permission for recreation facilities (inc. village hall, cricket pavillion, MUGA and 5 new homes - *housing area not suitable for designation, but cricket pitch and facilities are suitable for their recreational value

SNAPE

Site Reference	Site Address	Recommendation	Reason for recommendation
ALT/B/135/007/G	Land at The Village Green, Snape, North Yorkshire	Y	Beauty, recreational value and historic significance
ALT/B/135/008/G	Snape Trees, Land Both Sides of The Avenue, Stretching N/S Along Watery Lane, Snape, North Yorkshire	N	Highway verge
ALT/B/135/008A/G	Land at the allotments, The Avenue, Snape, North Yorkshire	Y	Recreational value

STILLINGTON

Site Reference	Site Address	Recommendation	Reason for recommendation
ALT/E/141/006/G	Land at Townend Pond, High Street, Stillington, North Yorkshire	Y	Beauty, tranquillity, historic significance and value for informal recreation, richness of wildlife
ALT/E/141/007/G	Graveyard At North Back Lane, Stillington, North Yorkshire	Y	Historic significance and tranquillity
ALT/E/141/008/G	Land to the West of St Nicholas' Church and The Old Vicarage, Stillington, North Yorkshire	Y	Historic significance, local biodiversity and tranquillity
ALT/E/141/009/G	Land Opposite Newton House, Carr Lane, Stillington, North Yorkshire	Y	Recreational value and richness of wildlife
ALT/E/141/010/G	Land Adjacent to Stillington Social Club, Carr Lane, Stillington, North Yorkshire	Y	Recreational value and richness of wildlife (in wooded area).
ALT/E/141/011/G	Land Next to Playground, Carr Lane, Stillington, North Yorkshire	Y	Recreational value
ALT/E/141/012/G	Land Opposite The Cottages, B1363, Stillington, North Yorkshire	N	Not demonstrably special - highway verge
ALT/E/141/013/G	The Village Green/Village Hall, Stillington, North Yorkshire	Y	Beauty and historic significance
ALT/E/141/014/G	Land to the South of Stillington Village Hall, The Green, Stillington, North Yorkshire	Y	Beauty and historic significance

STOKESLEY

Site Reference	Site Address	Recommendation	Reason for recommendation	Consultation responses / qualifications
ALT/S/142/032/G	Recreation Ground, North Road, Stokesley, North Yorkshire	Y	Recreational Value	
ALT/S/142/033/G	Land At West Green, Stokesley, North Yorkshire	Y	Beauty, recreational value and historic significance	
ALT/S/142/034/G	Stokesley Showfield, Stokesley, North Yorkshire	Y	Recreational value - showground	While the primary use of the site is agricultural land (which is not suitable for designation), it clearly fulfils a recreational purpose as the Stokesley showground.
ALT/S/142/035/G	Land Opposite Neasham House Farm, Adj to Tameside, Stokesley, North Yorkshire	N	Not locally significant	
ALT/S/142/036/G	Land At Grange Drive, Stokesley, North Yorkshire	N	Not locally significant	
ALT/S/142/037/G	Land Between The Acres and Neasham Lane, Stokesley, North Yorkshire	Y	Recreational Value	
ALT/S/142/038/G	Land to Rear Of St Josephs Presbytery, 1 Tanton Road, Stokesley, North Yorkshire	N	No local significance	The site looks to have some historic interest, but not enough to justify designation on grounds of historic significance
ALT/S/142/039/G	Land Adjacent to Footway (from the Paddock) at The Acres, Stokesley North Yorkshire	N	Not locally significant	
ALT/S/142/040/G	Land Adj to Copswood Walk, between Pinewood Walk and Tanton Rd, Stokesley, North Yorkshire	N	Not locally significant	
ALT/S/142/041/G	Land to Rear of Properties At Crowood Avenue and Elmwood Close, Stokesley, North Yorkshire	N	Not locally significant	
ALT/S/142/042/G	Land Adjacent to Footway from Beechwood Ave to Cherrywood Ave, Stokesley, North Yorkshire	N	Not locally significant	
ALT/S/142/043/G	Land Along B1365 at Cedarwood Ave and Ashwood Drive, Stokesley, North Yorkshire	N	Not locally significant	
ALT/S/142/044/G	Land Stretching Along River Leven from Malvern Close to Stokesley Bridge, Stokesley, North Yorkshire	Y*	Beauty, recreational value and historic significance *omit utility land	Amend site boundary to omit Utility apparatus

THIRSK

Site Reference	Site Address	Recommendation	Reason for recommendation
T/139/015/G	Warehouse Buffer Depot Sowerby North Yorkshire YO7 1QY	N	Not demonstrably special
ALT/T/139/022/G	Land Off Back Lane, Sowerby, North Yorkshire	N	Not demonstrably special - private farmland
ALT/T/139/023/G	Land at Sowerby Flats, North and South of Blakey Lane, Thirsk, North Yorkshire	N	Site as a whole is extensive; However, parts of the site have recreational value, historic significance and richness of wildlife (see below)
ALT/T/139/023A/G	Land to the South of Health Centre, Sowerby Flats, Thirsk, North Yorkshire	Y	Recreational value
ALT/T/139/023B/G	Land Covering SINC Area, Sowerby Flats, Thirsk, North Yorkshire	Y	Richness of wildlife
ALT/T/139/023C/G	Land between Blakey Lane & A168, Sowerby Flats, Thirsk, North Yorkshire	Y	Historic significance
ALT/T/139/024/G	Parcel of Land Between the A19 and A168 Slip Road, Opp Caravan Site at Bankside Close, Thirsk	N	Amenity planting associated with the A618 - not demonstrably special
ALT/T/152/014/G	Land Opposite Recreational Ground, Newsham Road, New Thirsk	Y	Potential historic interest
ALT/T/152/015/G	Land At Front Street, Norby, Thirsk, North Yorkshire	Part	Agricultural land; Not demonstrably special
ALT/T/152/015A/G	Priority Habitat Land, Front Street, Norby, Thirsk, North Yorkshire	Y	Recreational value, richness of wildlife and historic significance
ALT/T/152/016/G	Millennium Green, Dowber Way, Old Thirsk, North Yorkshire	Y	Recreational value and richness of wildlife
ALT/T/152/017/G	Land Between A19 and South Dowber Lane, Thirsk, North Yorkshire	N	Obvious informal recreational use, but private farmland
ALT/T/152/017B/G	Land Between A19 and South Dowber Lane, Thirsk, North Yorkshire	Y	The wooded part of site has richness of wildlife
ALT/T/152/018/G	Land Between A19 and South Dowber Lane, Thirsk, North Yorkshire	N	Obvious informal recreational use, but private farmland

THORNTON LE BEANS

Site Reference	Site Address	Recommendation	Reason for recommendation
T/156/001/G	Chapel of Ease Thornton Le Beans North Yorkshire DL6 3SP	Y	Historic significance
T/156/002/G	Playing Fields Thornton Le Beans North Yorkshire DL6 3SP	Y	Recreational value

TOPCLIFFE

Site Reference	Site Address	Recommendation	Reason for recommendation
ALT/T/163/005/G	Recreation Ground, Bowling Green and Play Area, Adjacent to A168 Slip Road, Topcliffe, North Yorks	Y	Recreational Value
ALT/T/163/006/G	Topcliffe Cemetery, Winn Lane, Topcliffe, North Yorkshire	Y	Historic significance, informal recreation value and richness of wildlife
ALT/T/163/007/G	Allotment Gardens, Opposite Manor Close, Long Street, Topcliffe, North Yorkshire	Y	Recreational value
ALT/T/163/008/G	Land At Back Lane, South of Pond End, Topcliffe, North Yorkshire	N	Not demonstrably special
ALT/T/163/009/G	Land at St Columbas Church, Church Street, Topcliffe, North Yorkshire	Y	Historic significance
ALT/T/163/010/G	Land at Anchor Dikes Between Station Road and Catton Lane, Topcliffe, North Yorkshire	N	Private grazing and arable land

WEST TANFIELD

Site Reference	Site Address	Recommendation	Reason for recommendation
ALT/B/170/014/G	Land at Tanfield Bridge Between River and Meadowfields, West Tanfield, N. Yorkshire	N	This part of site is not demonstrably special
ALT/B/170/014B/G	Recreation Ground, Meadowfields, West Tanfield, N. Yorkshire	Y	This part of the wider site has recreational value

PROPOSED SITE ALLOCATION SUMMARIES

(FOR PHASE 3 AND 4 SITES)

THESE SUMMARIES ARE FOR SITES THAT HAVE BEEN ASSESSED IN PHASES 3 AND 4 AND HAVE NOT BEEN OUT TO PUBLIC CONSULTATION.

THE SUMMARIES ARE GROUPED ALPHABETICALLY BY SETTLEMENT.

APPLETON WISKE

Site Reference	Site Address	Recommendation	Reason for recommendation
ALT/N/008/001/G	Plot of Land West of Shangri-La, Appleton Wiske, Northallerton, North Yorkshire	Y	Recreational value
ALT/N/008/002/G	Plot of Land East of Shangri-La, Appleton Wiske, Northallerton, North Yorkshire	Y	Recreational value
ALT/N/008/003/G	Appleton Wiske Allotments Prospect View Appleton Wiske North Yorkshire	Y	Recreational value
ALT/N/008/004/G	Appleton Wiske County Primary School Front Street Appleton Wiske North Yorkshire	N	School grounds
ALT/N/008/005/G	Appleton Wiske Play Area Recreation Ground Front Street Appleton Wiske North Yorkshire	Y	Recreational value
ALT/N/008/006/G	Appleton Wiske Part of Recreation Ground Front Street Appleton Wiske, North Yorkshire	Y	Recreational value
ALT/N/008/007/G	Appleton Wiske St Marys Church Grounds Front Street Appleton Wiske North Yorkshire	Y	Historic significance
ALT/N/008/008/G	Appleton Wiske Tennis Courts Recreation Ground Front Street Appleton Wiske North Yorkshire	Y	Recreational value
ALT/N/008/009/G	Appleton Wiske Recreation Ground Front Street Appleton Wiske North Yorkshire	Y	Recreational value

EASINGWOLD

Site Reference	Site Address	Recommendation	Reason for recommendation
ALT/E/041/058/G	Wooded area accessed from Drovers Court, Easingwold, North Yorkshire	Y*	Recreational value, tranquility and richness of wildlife; *part of the proposed site area is agricultural land and not demonstrably special

STOKESLEY

Site Reference	Site Address	Recommendation	Reason for recommendation
ALT/S/142/045/G	Strip of Land South of Westlands, extending into Riversdene, Stokesley, North Yorkshire	N	Highway verge
ALT/S/142/046/G	Strip of Land to the West Side of Riverslea, Stokesley, North Yorkshire	N	Highway verge
ALT/S/142/047/G	Strip of Land extending along Riversdene down to Riverslea, Stokesley, North Yorkshire	N	Highway verge
ALT/S/142/048/G	Strip of Land along Riverslea, Stokesley, North Yorkshire	N	Highway verge
ALT/S/142/049/G	Strip of Land along Riverslea, Stokesley, North Yorkshire	N	Highway verge
ALT/S/142/050/G	Plot of Land opposite 30 Riverslea, Stokesley, North Yorkshire	N	Not locally significant
ALT/S/142/051/G	Plot of Land east of El sub station, off Thirsk Road, Stokesley, North Yorkshire	Y	Potential recreational value
ALT/S/142/052/G	Plot of Land west of El sub station, Stokesley, North Yorkshire	Y	Recreational Value

KIRKBY

Site Reference	Site Address	Recommendation	Reason for recommendation
ALT/S/082/001B/G	Strip of Land between Moo Lodge and Hall, Church Row, Kirkby, North Yorkshire	N	Highway verge
ALT/S/082/001A/G	Triangular plot of land in front of Church Hill Cottages, Church Row, Kirkby, North Yorkshire	N	Highway verge
ALT/S/082/001C/G	Plot of land in front of the School House, Hill Road, Kirkby, North Yorkshire	N	Highway verge
ALT/S/082/002A/G	Strip of Land South of Hill View, Hill Road (East sides), Kirkby, North Yorkshire	N	Highway verge
ALT/S/082/002B/G	Strip of Land South of Hill View, Hill Road (West side), Kirkby, North Yorkshire	N	Highway verge
ALT/S/082/003A/G	Strip of Land North of Track to the Rear of Kirkby House Farm, Kirkby, North Yorkshire	N	Not demonstrably special
ALT/S/082/003B/G	Strip of Land South of Track to the Rear of Kirkby House Farm, Kirkby, North Yorkshire	N	Not demonstrably special
ALT/S/082/004/G	Strip of Land north of Moo Lodge, Kirkby Lane, Kirkby, North Yorkshire	N	Highway verge

NORTHALLERTON

Site Reference	Site Address	Recommendation	Reason for recommendation
ALT/N/123/032/G	4 plots of land at Romanby village green, Romanby, North Yorkshire	Y	Village green - beauty, recreational value and historic significance
ALT/N/123/033/G	School Playing Fields at Romanby Primary School, Romanby, North Yorkshire	N	School grounds
ALT/N/123/034/G	Joint Field serving Broomfield Primary & Sacred Heart RC Primary, Romanby, North Yorkshire	N	School grounds
ALT/N/123/035/G	Playing Fields at Ainderby Road Leisure Park, adjacent sewage works, Romanby, North Yorkshire	Y	Recreational value
ALT/N/123/036/G	Playing Fields accessed via Thistle Close and Oaktree Drive, Romanby, North Yorkshire	Y	Recreational value
ALT/N/123/037/G	Grange Close Play Area, Grange Close, Romanby, North Yorkshire	Y	Recreational value
ALT/N/123/038/G	Playing Field at Brydon Close & Carrol Close, Romanby, North Yorkshire	Y	Recreational value
ALT/N/123/039/G	Play area adjacent to sports pavilion, Farndale Avenue, Romanby, North Yorkshire	Y	Recreational value
ALT/N/123/040/G	Land in front of no 11 Honeysuckle Close, Romanby, North Yorkshire	N	Not locally significant
ALT/N/123/041/G	Land between nos 19 & 20 Honeysuckle Close, Romanby, North Yorkshire	N	Not locally significant
ALT/N/123/042/G	Land at Crestbrooke, Romanby, North Yorkshire	Y	Recreational value
ALT/N/123/043/G	Northallerton Town Football Club grounds, Ainderby Road, Romanby, North Yorkshire	N	Professional sport stadium - sport is viewed, not played so site is not demonstrably significant for recreation
ALT/N/123/044/G	Land at Grenadier Drive, Romanby, North Yorkshire	Y	Recreational value